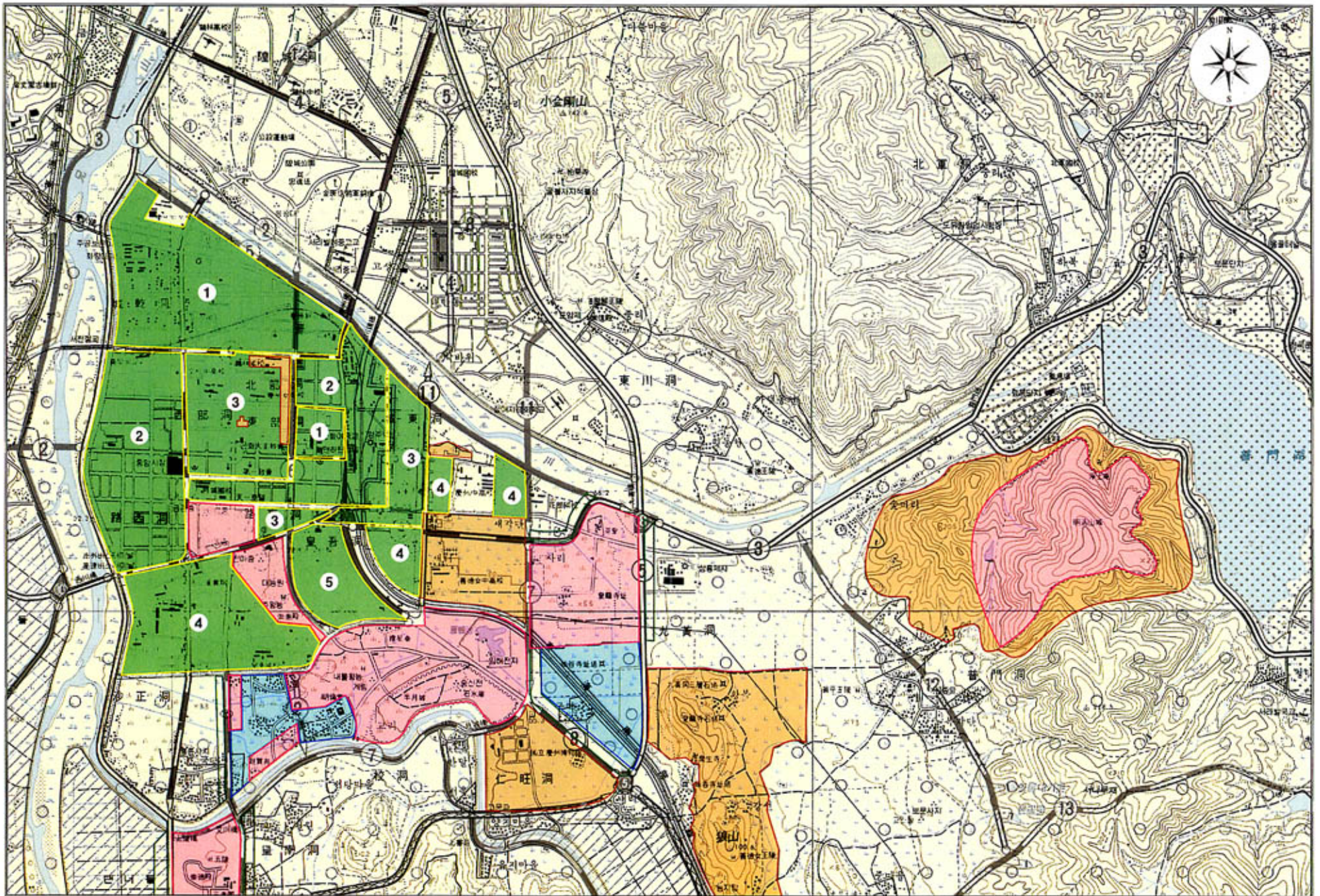


- | | | | |
|--------------|--|--|--|
| ment area |  Industrial area |  Sugar-cane cultivation |  Forest |
| utional area |  Residential area |  Pond |  Other |
| nercial area |  Rice field | | |

Existing land use

Map2 : Suburban Areas excluding the Mt. Namsan Belt



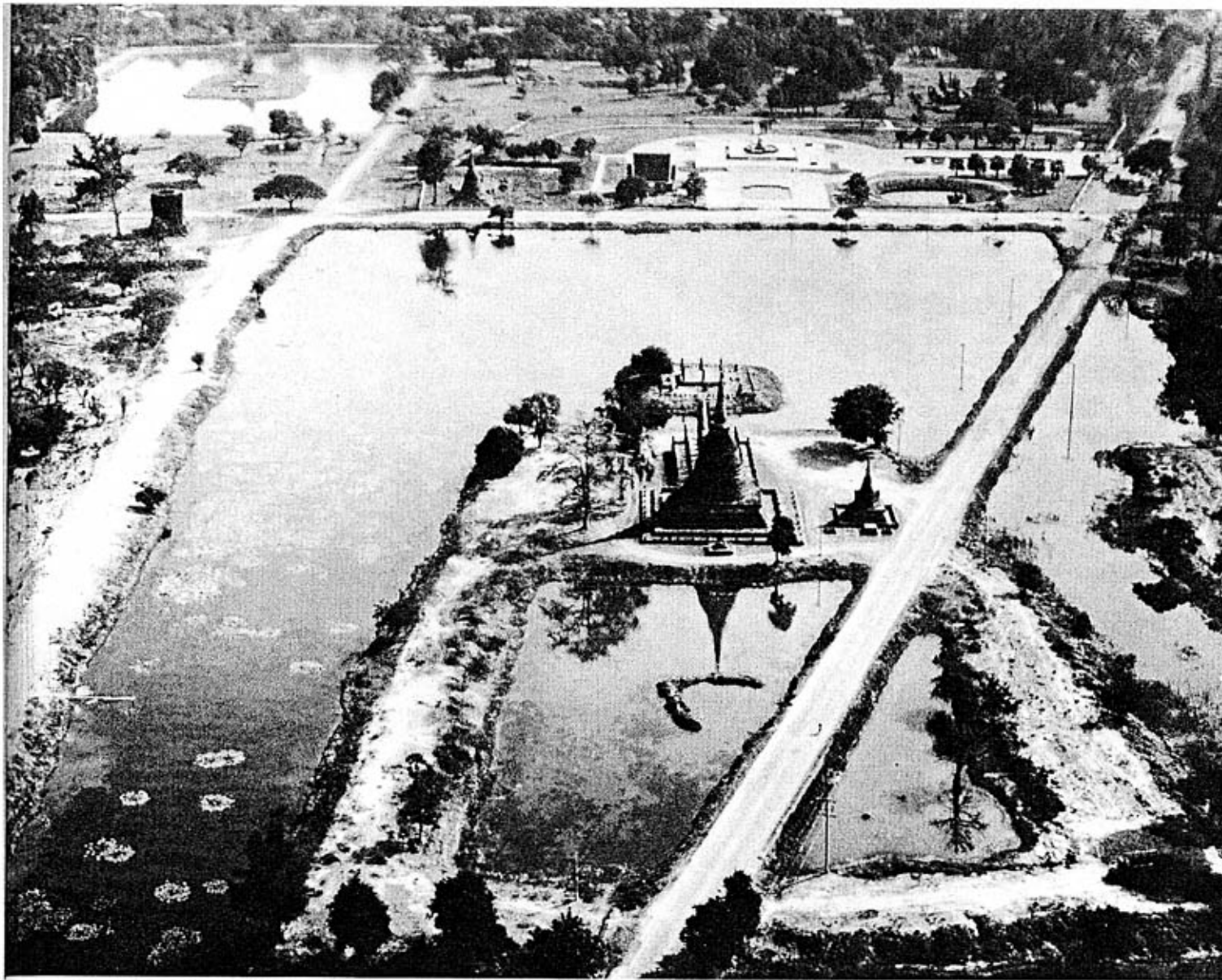


Photo Alexis Vorontzoff, Unesco

A view of part of the old city of Sukhothai, which is situated in central Thailand some 500 kilometres north-west of Bangkok. At centre, the *chedi* (a solid round monument with a tall finial or spire) of Wat Sra-Sri. The old city has been designated as a historical park.