

Kinki Regional Development Bureau Summary

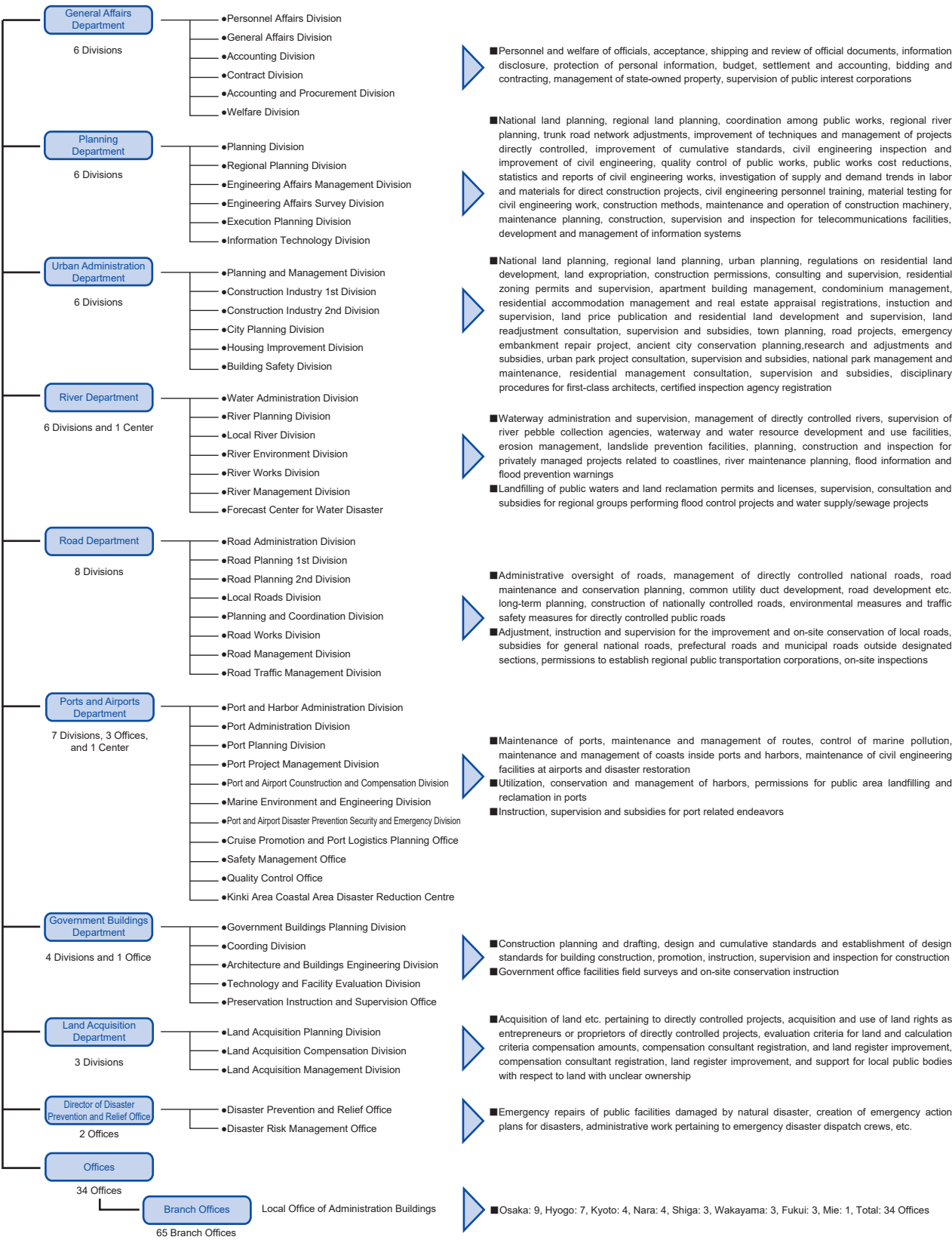
Office Jurisdiction

Bureaus are located in both Kobe and Osaka cities. Framework includes Administrative, Construction Planning, Rivers, Roads, Ports and Harbors, Maintenance and Land for a total of 8 departments, 46 divisions, 4 offices, and 2 centers, as well as 2 offices primarily responsible for disaster preparedness (locatedd in Kobe Sity for ports and harbors).

To fulfil the duties of the bureau, there are 34 offices with 65 branches.

As of April 1st, 2025, there are 2,237 employees of the Kinki Regional Development Bureau that carry out the duties of the bureau.

Kinki Regional Development Bureau Framework

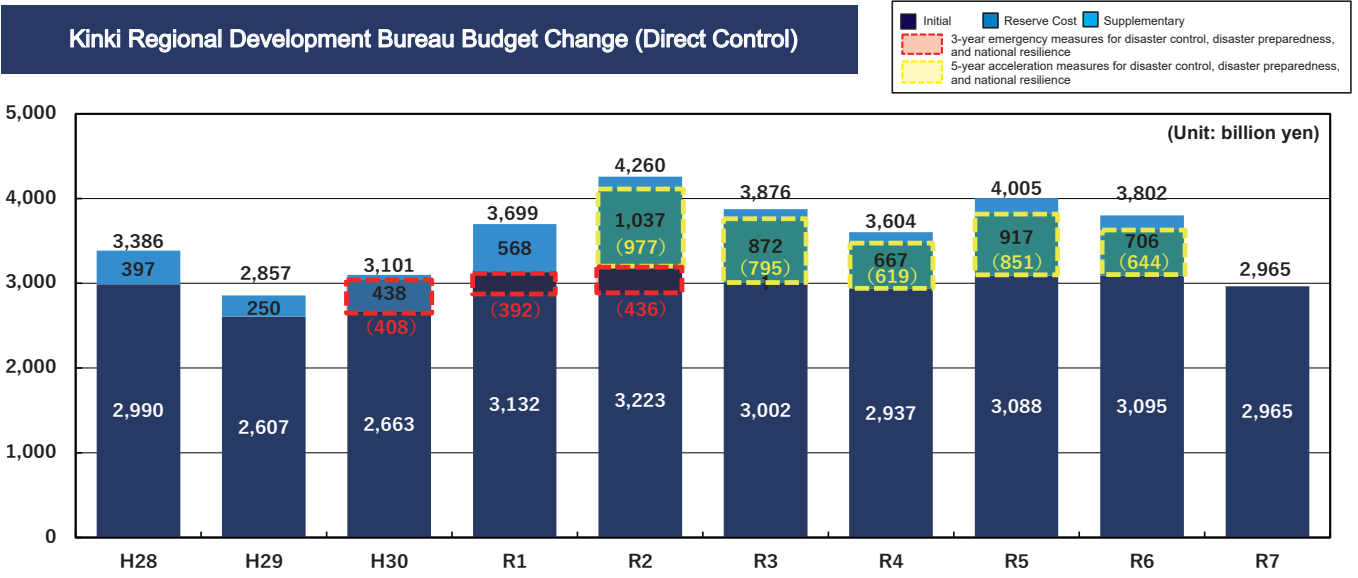


Kinki Regional Development Bureau History

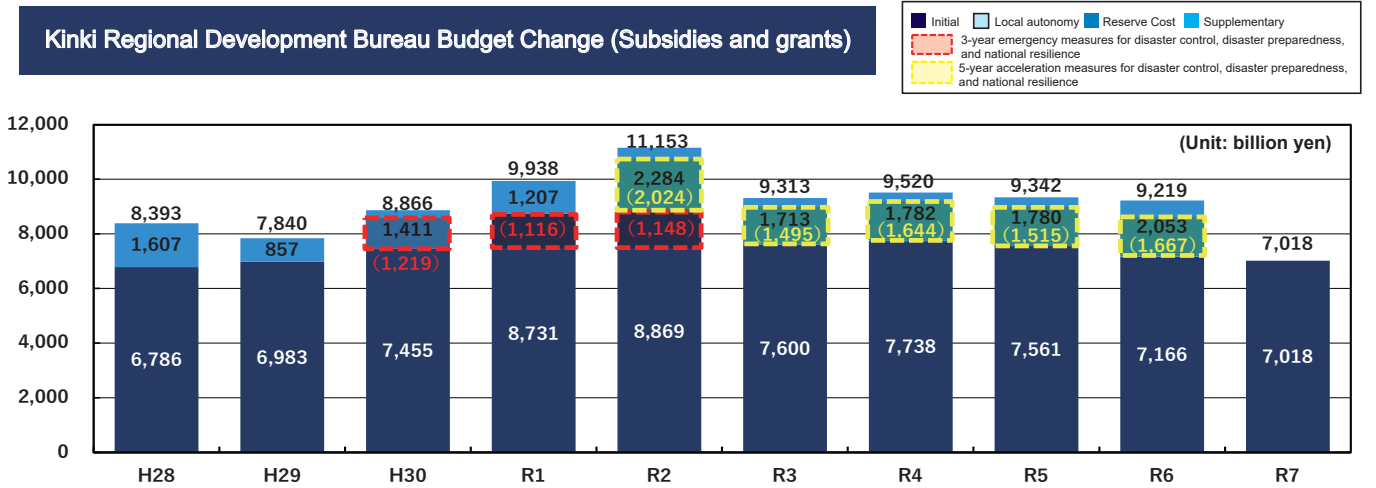
March	1874	The Home Ministry Osaka Branch of Civil Engineering was established.
May	1875	Home Ministry Osaka Branch of Civil Engineering had its name changed to Home Ministry Civil Engineering Osaka Bureau.
January	1877	The Home Ministry Civil Engineering Osaka Bureau was restructured and renamed to Home Ministry Yodo River Branch of Civil Engineering (Yodo River Management and Construction).
July	1886	Following the orders of the Supervising Officer of Civil Engineering, the bureau was reorganized into the 4th Ward Supervision Office and gained direct control over the Chubu and Kinki areas and began performing and supervising civil engineering works.
July	1894	Name changed to Fifth Ward Civil Supervision Office. Jurisdiction changed to Kinki, Tokushima and Kochi areas.
April	1905	Name changed to Civil Engineering Office, Osaka Branch of the Ministry of Home Affairs. Supervision authority was transferred to the Ministry and the civil engineering office absorbed responsibility for civil engineering for directly controlled land.
April	1919	Civil Engineering Office, Kobe Branch of the Ministry of Home Affairs was established. The jurisdiction of the office in Osaka changed.
November	1943	The Harbor Division changed to the Transport Ministry of Communication, 3rd Port Construction Department. The Osaka Civil Engineering Office changed into the Kinki Civil Engineering Office of the Ministry of Home Affairs and under order of Transport Ministry of Communication, 3rd Port Construction Department was merged with the Kobe office and the jurisdiction changed to include everything east of Hyogo due to the establishment of the Chubu Shikoku office.
May	1945	Because of government revisions, the Transport Ministry of Communication, 3rd Port Construction Department became the Ministry of Transportation 3rd Port Construction Department.
January	1948	Home Affairs changes into the Prime Minister's Office Kinki District Construction Bureau and became an the local office for the Prime Minister's Office.
July	1948	According to the founding of the Ministry of Construction, the Prime Minister's Office Kinki District Construction Bureau had its name changed to Ministry of Construction Kinki District Construction Bureau.
August	1952	Ministry of Transportation 3rd Port Construction Department had its name changed to Ministry of Transportation 3rd Port Construction Bureau.
December	1958	Ministry of Construction Kinki District Construction Bureau moved from 2-6 Tosabori-dori, Nishi-ku, Osaka to its current location at the Osaka Joint Government Building at 1-5-44 Otemae, Chuo-ku, Osaka.
May	1965	Due to a revision in the Ministry of Transportation Installation Law, the Ministry of Transportation 3rd Port Construction Bureau absorbed the duties of airport engineering works. The Airport Engineering Division was established.
January	2001	Due to the reorganization of ministries and agencies, the Ministry of Construction Kinki District Construction Bureau and the Ministry of Transportation 3rd Port Construction Bureau were merged. Furthermore, the Ministry of Land, Infrastructure and Transport Kinki Regional Development Bureau was established.
November	2022	Ministry of Land, Infrastructure, Transport and Tourism Kinki Regional Development Bureau moved from Osaka Joint Government Building at 1-5-44 Otemae, Chuo-ku, Osaka to its current location at the Otemae Joint Government Building at 3-1-41 Otemae, Chuo-ku, Osaka.

Kinki Regional Development Bureau Budget Change

Kinki Regional Development Bureau Budget Change (Direct Control)



Kinki Regional Development Bureau Budget Change (Subsidies and grants)



Overview of initial and supplementary budgets since 2016 (direct control) *Excluding zero government bonds

(Unit: million yen)

Initial budget	FY2016	FY2017	FY2018	FY2019	FY2020	FY2021	FY2022	FY2023	FY2024	FY2025
Flood Control	72,022	66,227	67,571	91,919	94,969	83,293	74,291	79,867	80,501	78,522
Coasts	2,215	2,637	2,677	3,710	3,587	3,101	3,465	3,248	3,509	3,194
Road Maintenance	178,086	148,238	157,124	181,439	190,062	179,720	180,849	193,780	193,671	177,928
Harbors	33,775	31,449	31,586	30,231	27,374	27,808	25,681	24,319	23,808	28,374
National Parks etc.	6,154	6,504	4,977	4,475	4,586	4,860	4,295	4,609	4,416	4,640
(General Public Total)	292,252	255,055	263,935	311,774	320,578	298,782	288,581	305,822	305,906	292,657
Office Building Maintenance	6,721	5,582	2,079	1,108	1,422	1,199	4,963	2,764	3,270	3,516
Airports	0	44	280	312	318	263	162	202	326	367
(Total)	298,973	260,681	266,294	313,194	322,318	300,244	293,706	308,789	309,502	296,540

Supplementary budget	FY2016	FY2017	FY2018	FY2019	FY2020	FY2021	FY2022	FY2023	FY2024	FY2025
Flood Control	10,713	11,181	28,086	27,647	47,851	31,740	25,267	41,239	29,517	-
Coasts	345	408	1,283	277	661	1,291	1,369	1,417	1,042	-
Road Maintenance	25,715	12,658	11,064	28,656	45,558	48,956	34,177	43,572	35,409	-
Harbors	2,422	450	2,630	0	8,982	3,931	5,101	4,704	4,218	-
National Parks etc.	480	300	0	90	453	639	652	628	420	-
(General Public Total)	39,675	24,997	43,063	56,670	103,505	86,557	66,567	91,560	70,607	-
Office Building Maintenance	0	0	734	81	159	692	128	166	43	-
Airports	0	0	0	0	0	0	0	0	0	-
(Total)	39,675	24,997	43,797	56,751	103,664	87,249	66,695	91,727	70,649	-

*Figures are rounded to the nearest whole number, so fractions may not add up to the total.