

Rivers

River Projects (10 River Systems: Shingu River, Kino River, Yamato River, Yodo River, Kako River, Ibo River, Maruyama River, Yura River, Kita River, Kuzuryu River)
Dam Projects (3 locations: Daidogawa Dam, Asuwagawa Dam, Improvement of the dam in the upstream of Kuzuryu River)
Landslide Prevention Projects (1 location: Kamenose district)
Erosion Control Projects (3 locations: Rokko Mountain Range, Kizu River System, Kii Mountain Range)
Coastal Area Projects (1 location: Toban Coast)

Safety of the People, Guarantee of Security

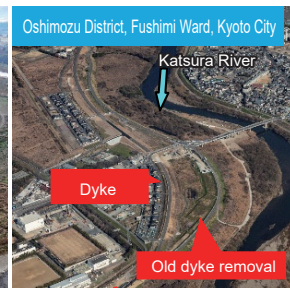
Flood control measures - focused implementation of measures against flood and sediment disasters for disaster prevention

We implement emergency measures in areas that have experienced major disasters recently to prevent future disasters. Furthermore, we accelerate preemptive disaster prevention measures to ensure safety and peace of mind in the region.

Maruyama River Retarding Basin Project



Oshimozu District River-widening Project



Asuwagawa Dam Construction Project



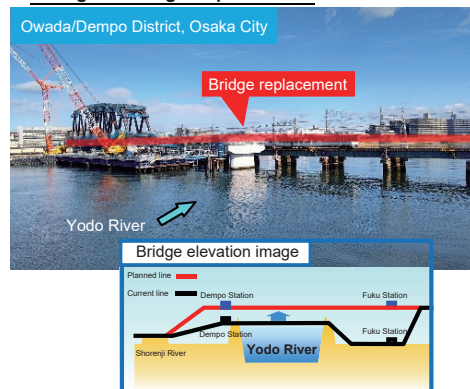
Otogawa Dam Construction Project



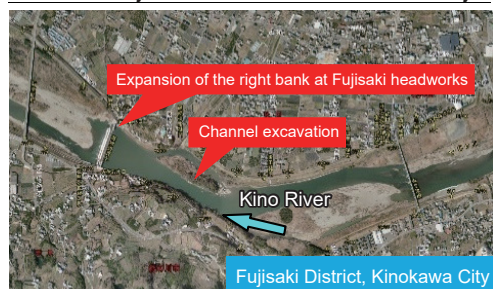
Emergency flood prevention measures at the middle reaches of the Kako River



Hanshin Namba Line Yodogawa Bridge Replacement



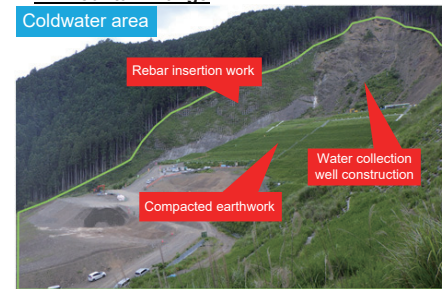
Kino River Fujisaki Narrow Pass Flood Prevention Project



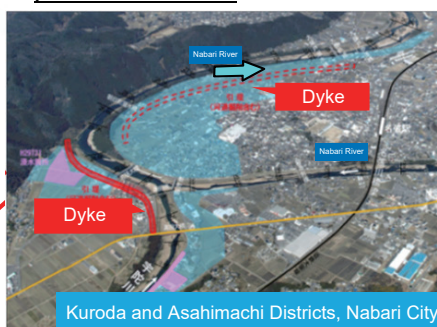
Kumano River Channel Excavation Project



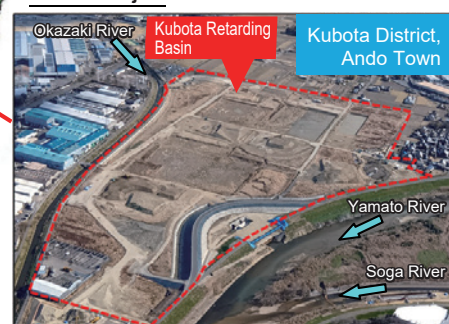
Direct Erosion Control Project for the Kii Mountain Range



Nabari Kawamachi Zukuri (make the city from the river) integrated inundation prevention measures



Yamato River Kubota Retarding Basin Flood Control Project



Promotion of flood control in drainage basins

In order to respond to disasters occurring more frequently and causing more severe damage due to climate change, we consider not only the catchment and river areas but also the flooded area as one collective catchment area in our drastic flood control measures.

By collaborating with all parties concerned according to the characteristics of the region, we will promote drainage basin flood control from both hardware and software perspectives.



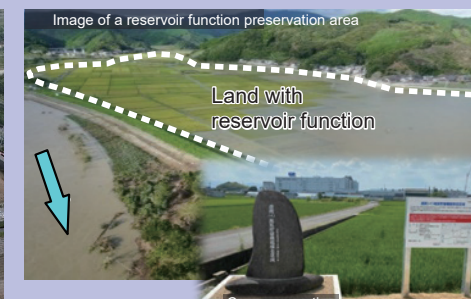
Measures to prevent and reduce flooding as much as possible



Development of retarding basins (Yamato River)

- Development of rainwater storage and infiltration facilities
- Utilization of reservoirs for flood control
- Construction and Renovation of Flood Control Dams
- Pre-release of water from multi-purpose dams
- Enhancing flood retention capabilities integrated with land use
- Development of river channel excavation, levees, retention basins, erosion control dams, and rainwater drainage facilities
- Strengthening levees aiming for resilient levees and other measures

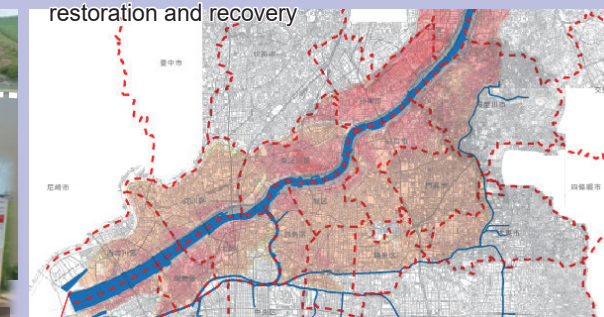
Measures to reduce what may be damaged



First in the nation to designate a reservoir function preservation area (Along Yamato River: Kawanishi Town and Tawaramoto Town, Nara Pref.)

- Designation of reservoir function preservation areas and flood damage prevention areas based on the designation of specified rivers running across the cities
- Land-use regulations, guidance, and relocation promotion, provision of risk information during real estate transactions, and exploration of financial incentives
- Development of secondary levees, preservation of natural levees, and management of open levees, and other measures

Measures to reduce damage and achieve early restoration and recovery



- Closing gaps in flood risk information coverage and disseminating multi-level flood risk information
- Development of long-term forecasting technologies and real-time monitoring of inundation and collapse
- Flood countermeasures for factories and buildings, and formulation of BCPs
- Land use regulations, guidance, relocation promotion, risk information provision during real estate transactions, and exploration of financial incentives
- Strengthening the Tec-Force System through public-private partnerships
- Development and enhancement of drainage gates and drainage capacity
- Establishment of Nippon Disaster Prevention Assets, and other measures

Promotion of nature restoration, water environment improvement, and waterfront development

To revitalize local communities by conserving and restoring habitats for diverse organisms, improving water quality, and creating attractive landscapes and waterfront spaces, we will collaborate with various stakeholders to advance natural restoration, water environment improvement, and waterfront development.

- Conservation and restoration of natural environments, including wetlands and backwaters
- Promotion of nature-rich river development
- Promotion of green infrastructure efforts
- Formation of ecosystem networks in collaboration with local residents and businesses
- Creation of vibrant communities by river-town development



Sharing and disseminating information on flood and sediment disasters that encourages residents to take action

Aiming for "Zero Delay in Evacuation," in cooperation with water basin flood control ambassadors, we inform residents of flood risks to encourage them to think about evacuation actions and also provide support for the creation of personal disaster prevention maps and timelines.



Advancing river management using UAVs and other technologies

By utilizing UAVs for river patrols, we aim to enhance and streamline river management. Careful inspection and monitoring of inaccessible or hazardous areas will ensure the safety of river spaces and facilities.

