

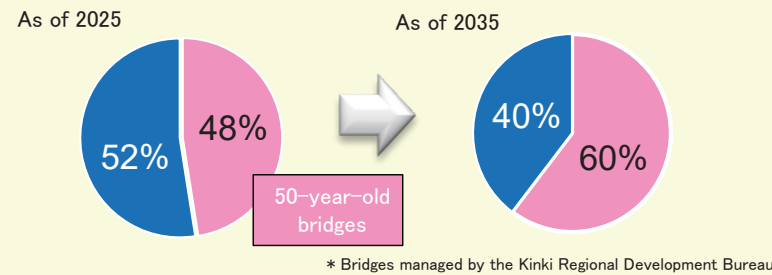
Roads

Safety of the People, Guarantee of Security

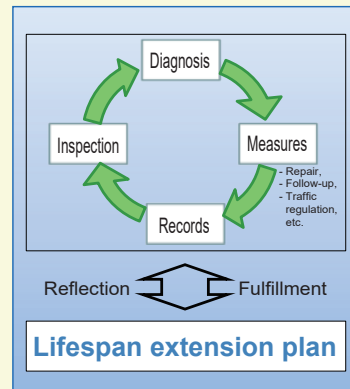
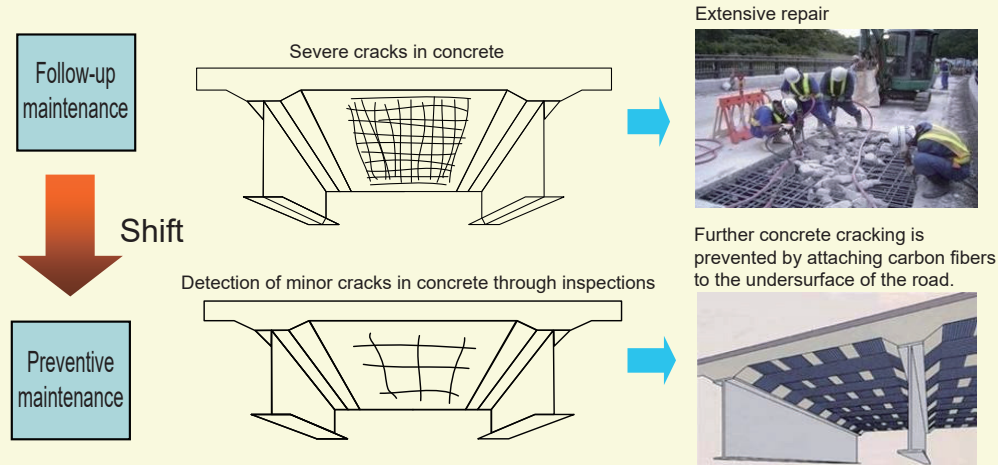
Realization of sustainable infrastructure maintenance through measures against infrastructure aging, etc.

For road facilities (bridges, tunnels, pavements, slopes, earthwork structures, and road accessories), we will enhance the maintenance cycle, including inspection, diagnosis, action, and record-keeping, to address aging infrastructure.

- The percentage of bridges that have been in service for over 50 years will reach approximately 60% in 10 years.

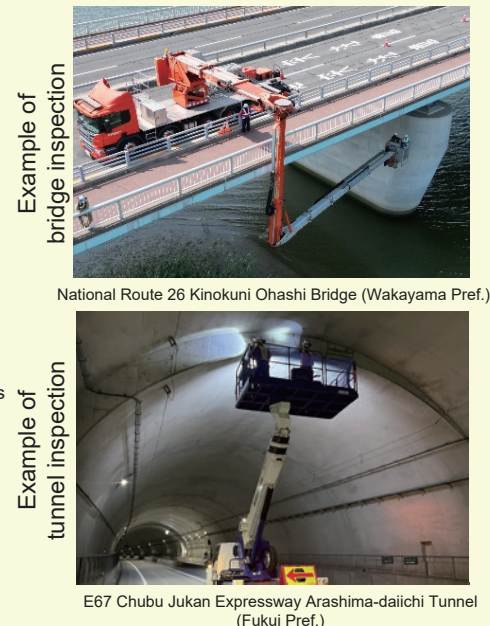


[Major projects] National Route 43: Dempo Ohashi Bridge Repairs
National Route 8: Mariyama Tunnel Repairs
Municipal Road Tomigaoka Nakamachi Line: Tsurumai Bridge Repairs (Repairs contracted out)



Maintenance cycle

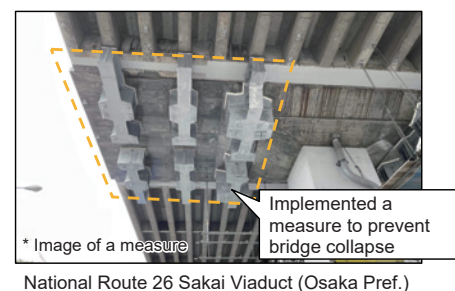
- Bridges, tunnels, and other similar structures are subject to comprehensive monitoring every five years through close visual inspection in accordance with uniform standards established by the national government.
- Starting the third round of inspections from fiscal 2024



Strongly promoting disaster prevention and mitigation measures to build a resilient nation that does not easily succumb to disasters

We will promote measures to prevent bridge collapses during earthquakes and formation of snow pile-up zones to prevent vehicles from being stranded during heavy snowfall, thereby ensuring a safe, secure, and highly reliable road network.

Bridge collapse prevention measure



Formation of snow pile-up zones



Achieving Sustainable Economic Growth

Regional Development Leveraging Unique Characteristics and Decentralized Nation Building

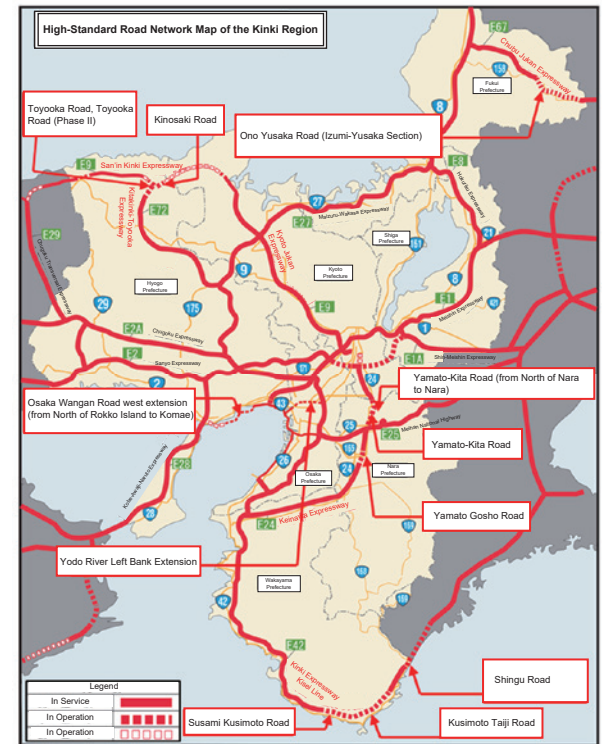
Promoting the development of wide-area road networks

We promote the development of a circular road network in the Kinki area to achieve a fast, smooth, and competitive logistics network by alleviating traffic congestion.

We promote the development of road networks connecting regions and hubs to support a society with digital implementation, smooth and invigorate the flow of people and goods, and transition to decentralized nation-building.

[Major projects]

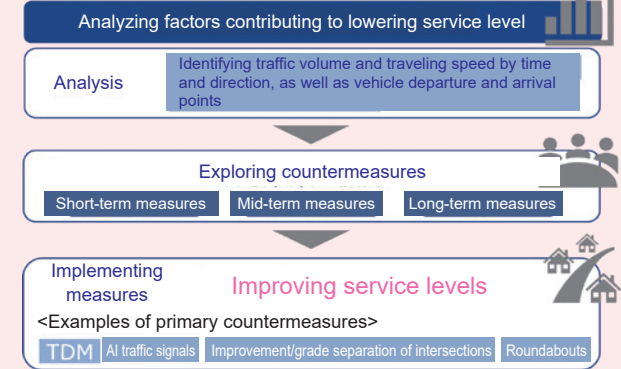
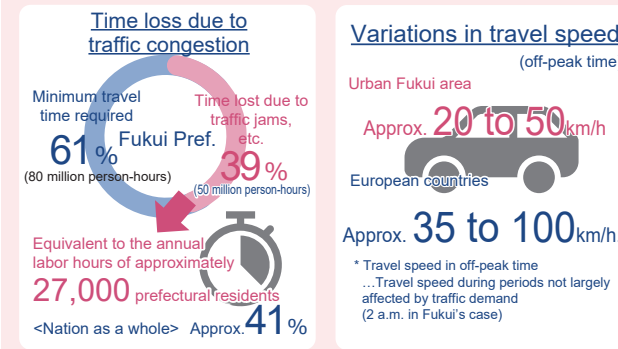
- National Route 1 Yodo River Left Bank Extension
- National Route 2 Osaka Wangan Road west extension (from North of Rokko Island to Komae)
- National Route 24 Keinawa Expressway
- National Route 42 Yamato-Kita Road (from North of Nara to Nara)
- National Route 158 Yamato-Kita Road, Yamato Goshō Road
- National Route 178 Kinki Expressway Kisei Line
- National Route 483 Susami Kusimoto Road, Kusimoto Taiji Road
- Toyooka Road, Toyooka Road (Phase II)



Promotion of WISENET 2050

We face numerous challenges, including “time loss due to traffic congestion” and “discrepancy in travel speeds compared to Western countries.” By utilizing the latest data, we will explore measures to raise the level of road services, aiming to resolve social issues in the region.

Current issues (Example of Fukui Pref.)



Promotion of DX, GX, and MX in the Road Sector

We will promote DX initiatives, including traffic management utilizing data, GX initiatives such as utilization of renewable energy to achieve a decarbonized society, and MX initiatives such as developing an environment for using new mobility service utilizing road space.

DX (Digital Transformation)

We will conduct analyses using ETC 2.0 probes, AI cameras, and human flow big data to explore measures for providing congestion information and enhancing service levels.



GX (Green Transformation)

To achieve a decarbonized society, we will introduce new technologies, such as sensor lighting, utilize renewable energy, and reduce electricity consumption.



MX (Mobility Transformation)

By utilizing road space, we will improve transportation convenience through the development of new mobility service environments and the social implementation of autonomous driving technology.

