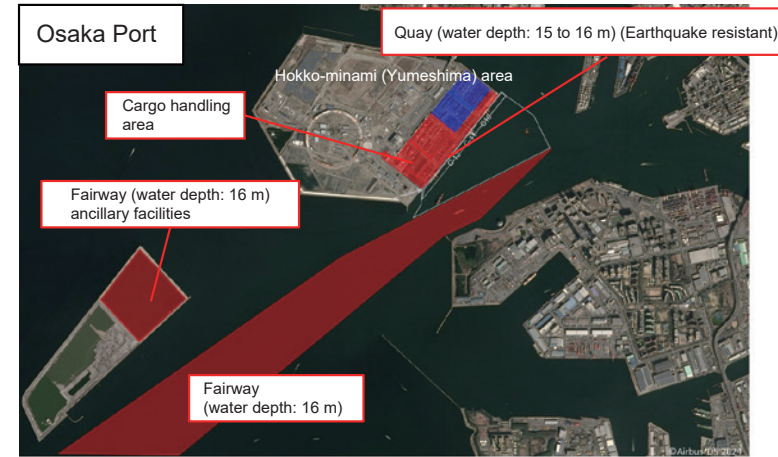
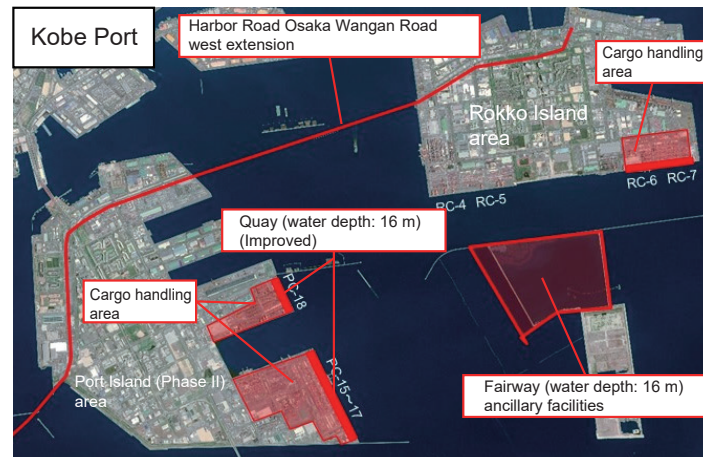


# Ports, Harbors, and Airports

## Achieving Sustainable Economic Growth

### Enhancement of competitiveness of Hanshin Port, an international container strategic port

At Hanshin Port (Kobe Port and Osaka Port), as the trend toward larger vessels deployed on international trunk routes is expected to continue, we will promote the development of deep-water container terminals capable of accommodating these larger vessels and increased cargo volumes. Also, to ensure smooth transport of port cargo and enhance the functionality of the Hanshin Port, we will promote the development of harbor roads.

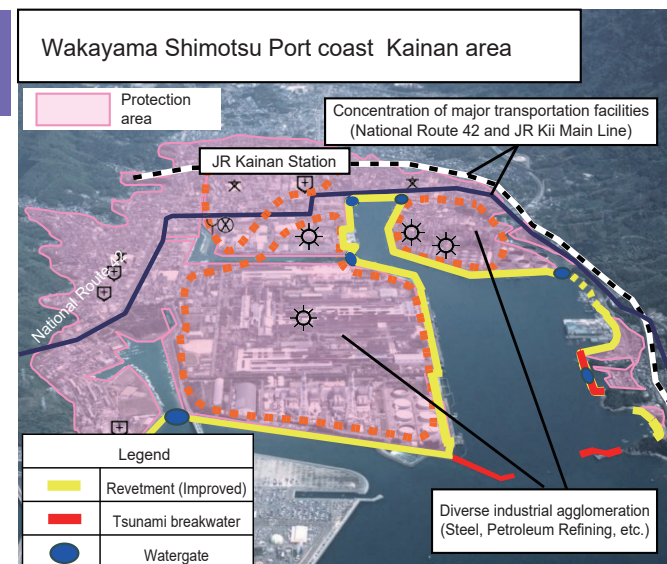


## Ensuring Safety and Security of the People

### Promotion of measures against the Nankai Trough Megathrust Earthquake Tsunami countermeasures at Wakayama Shimotsu Port coast (Kainan District)

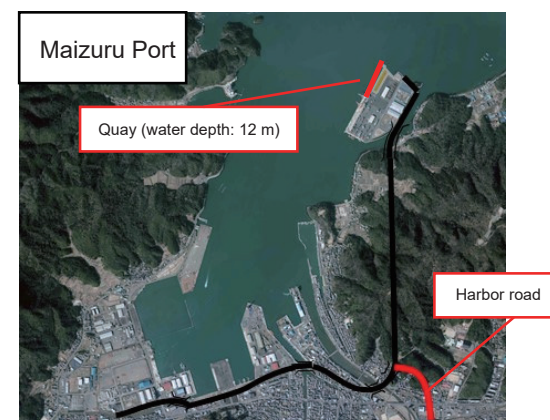
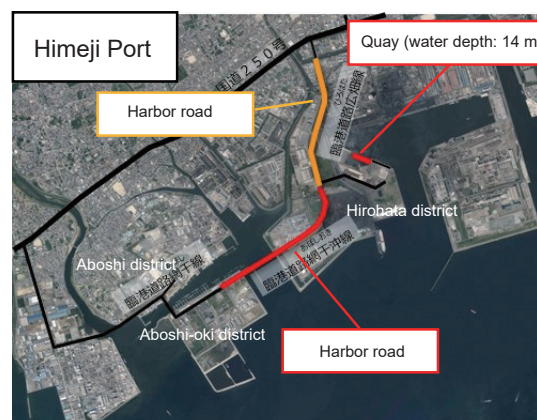
Areas projected to be inundated by a tsunami in Kainan City, Wakayama Prefecture, are home to administrative and disaster prevention hubs as well as manufacturers of high-value-added products.

Therefore, to protect people's lives and properties from large-scale earthquakes and tsunamis, such as the Nankai Trough earthquake, we will promote the improvement of coastal conservation facilities.



## Regional Development Leveraging Unique Characteristics to Contribute to Regional Revitalization 2.0 and Decentralized Nation-Building

To accommodate increased cargo demand from corporate relocations and capital investments in the areas behind ports, as well as the trend toward larger vessels, and to ensure smooth land transportation of port cargo, we will promote the development of international logistics terminals.



# Public Buildings

## Safety of the People, Guarantee of Security

### Promotion of the Nankai Trough earthquake countermeasures, etc. Strengthening the disaster prevention function of government offices and facilities that will serve as a disaster prevention base

#### •Upgrading of government offices and facilities that serve as disaster control bases is being promoted in cooperation with the respective regions

Ensuring necessary earthquake resistance for government offices conducting disaster prevention activities after a potential Nankai Trough mega earthquake, reducing environmental impact\* by about 47%, and as the nation's first "ZEB Oriented" government building complex, developing the Otemae Joint Government Building.



\* Methods for reducing environmental impact include high-performance glass and eco-terraces (load reduction methods), solar power generation (use of natural energy), LED lighting, and large temperature difference air and water distribution (facility system efficiency).

### Promotion of infrastructure aging countermeasures for the future Countermeasures for aging of government facilities

#### •Extending the service life of government facilities

Osaka Daisan National Government Building: Renovation of exterior walls, doors, and roofs

Kobe Regional Joint Government Building

•Addressing significant aging parts of existing government facilities  
Exterior wall renovation

### Promotion of the use of wood



At facilities such as Kyoto Gyoen Nakadachiuri Rest House and Otemae Joint Government Building, we are actively utilizing wood for structural materials and interiors based on the Act for Promotion of Use of Wood in Public Buildings, etc.

# Parks

## Regional Development Leveraging Unique Characteristics to Contribute to Regional Revitalization 2.0 and Decentralized Nation-Building

### Development of tourism base facilities in national parks

#### Nara Palace Site Historical Park (Heijo Palace Area)

Nara City, Nara

Efforts are underway to restore Nara-period structures, recreating the Heijo Palace as it once stood.



#### Yodogawa Riverside Park

Kyoto and Osaka

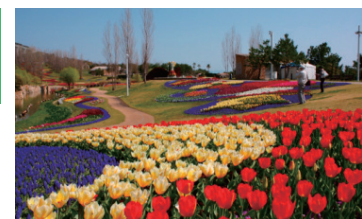
In the Searitei Area (Yawata City), people can view the 1.4 km rows of cherry blossom trees from the Observation Tower in spring.



#### Akashi Kaikyo National Government Park (Awaji Area)

Awaji City, Hyogo

People can enjoy the scenery of seasonal flowers, including spring tulips, throughout the year.



#### Akashi Kaikyo National Government Park (Kobe Area)

Kobe, Hyogo Prefecture

People can easily experience mountain village life, such as old private houses.

