

Rivers

River Projects (10 River Systems: Shingugawa River, Kinokawa River, Yamatogawa River, Yodo River, Kakogawa River, Ibogawa River, Maruyamagawa River, Yuragawa River, Kitagawa River, Kuzuryu-gawa River)
 Dam Projects (3 locations: Daidogawa Dam, Amagase Dam, Asuwagawa Dam)
 Landslide Prevention Projects (1 location: Kamenose district)
 Erosion Control Projects (4 locations: Rokkyo Mountain Range, Kidzugawa River System, Kuzuryu-gawa River System, Kii Mountain Range)
 Coastal Area Projects (1 location: Toban Coast)

Safety of the People, Guarantee of Security

Focus on flood/landslide control measures for prevention of recurrence

Emergency flood control measures are taken to prevent the recurrence of disasters that have caused considerable damage in recent years.

Emergency flood prevention measures at the middle reaches of the Kakogawa River



Directly controlled erosion protection project at Kii Mountain Range

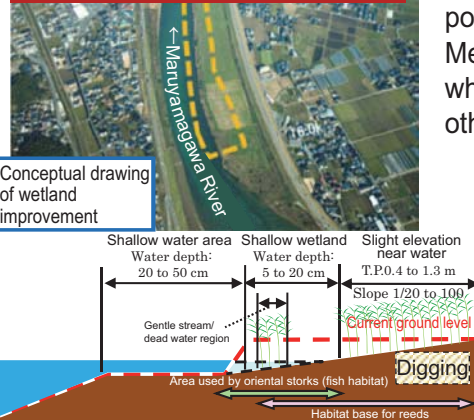


Regional Revitalization and Realization of an Affluent Life

Promotion of ecological networks centered on rivers

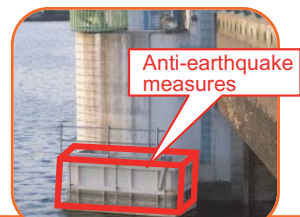
Ecological networks of diverse living organisms are established by efforts to conserve and restore water-front environments, such as improvement of wetlands.

Right bank area in the middle reaches of the main stream in Toyooka City



Nankai Trough Megathrust Earthquake Prevention Measure Promotion

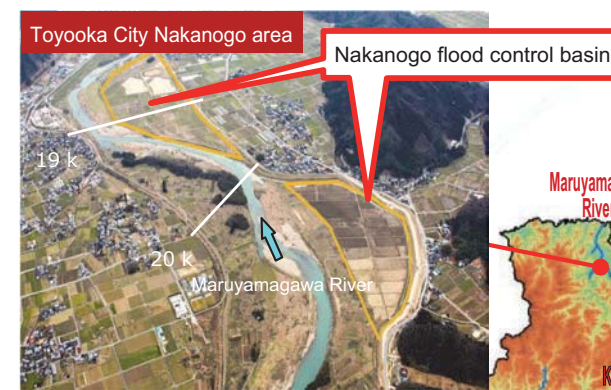
Anti-earthquake measures are taken to prepare for a possible Nankai Trough Megathrust Earthquake, which may be imminent, and other large earthquakes.



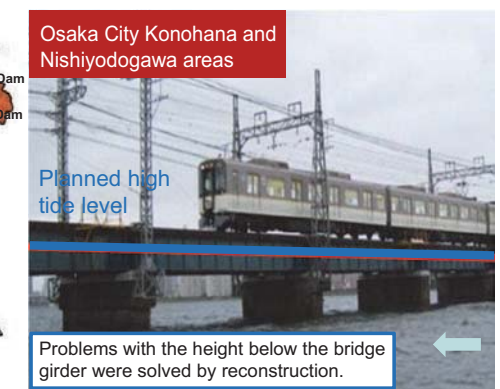
Reduction of damage from flooding by preventive flood control measures

Preventive flood control measures are taken to improve safety levels from flooding and ensure regional security and safety.

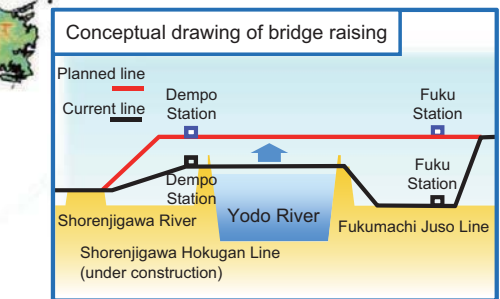
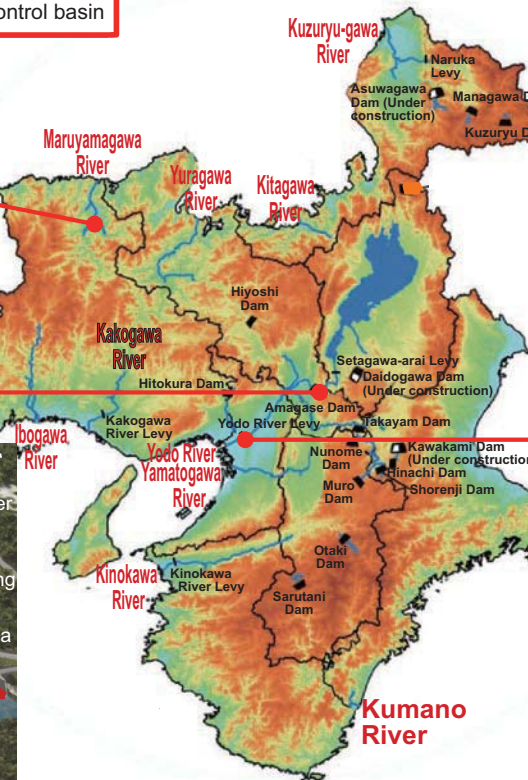
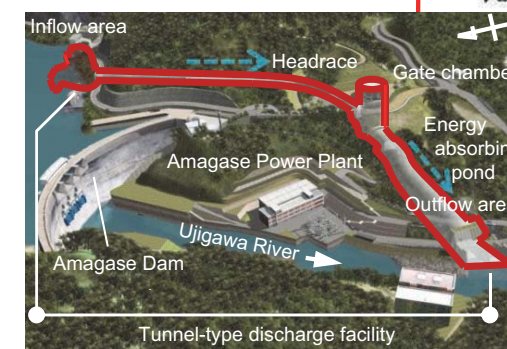
Maruyamagawa flood control basin project



Hanshin Namba Line Yodogawa Bridge reconstruction project

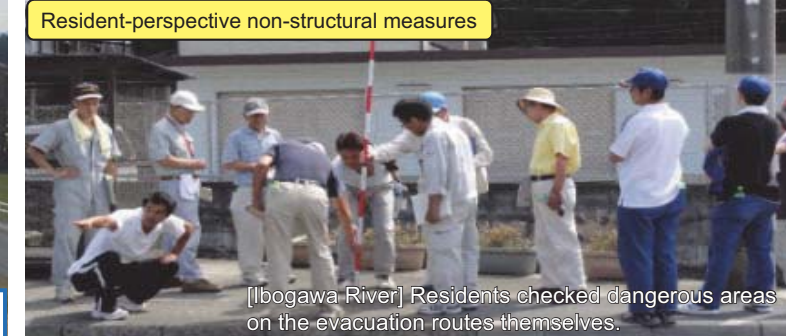
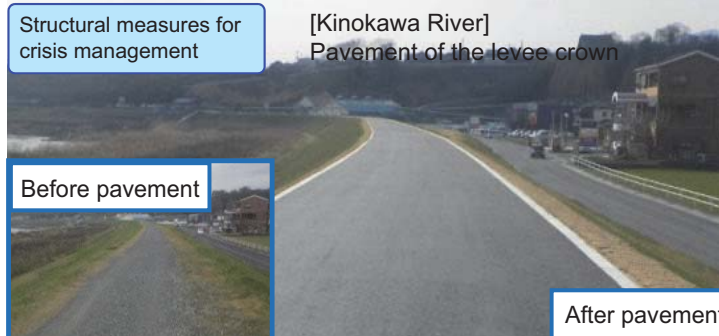


Amagase Dam Restart Project



Measures taken to rebuild a "Water Damage Prevention Conscious Society"

Under the "Water Damage Prevention Conscious Society Vision," which was established in response to heavy rains in the Kanto and Tohoku regions, projects to improve rivers (structural measures to safely discharge flood water, and structural measures for crisis management), which are planned to be completed in fiscal 2020, will continue to be carried out.



To reduce the number of persons who fail to escape to zero and minimize socioeconomic damage, an association consisting of local governments along rivers and managers of rivers will be established and related organizations will support and cooperate with each other on disaster mitigation projects.

