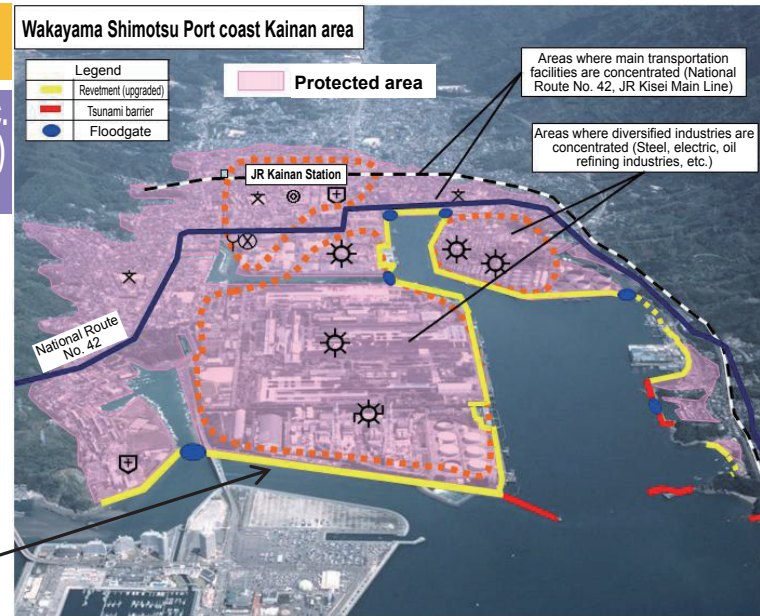
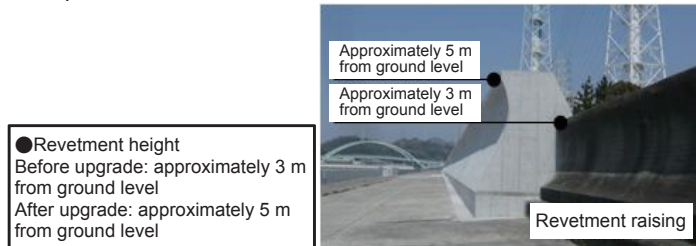


# Ports, Harbors and Airports

## Disaster Prevention and Reduction Measures

Promotion of the Nankai Trough earthquake countermeasures, etc. Tsunami countermeasure at the Shimotsu Port coast (Kainan area) in Wakayama prefecture

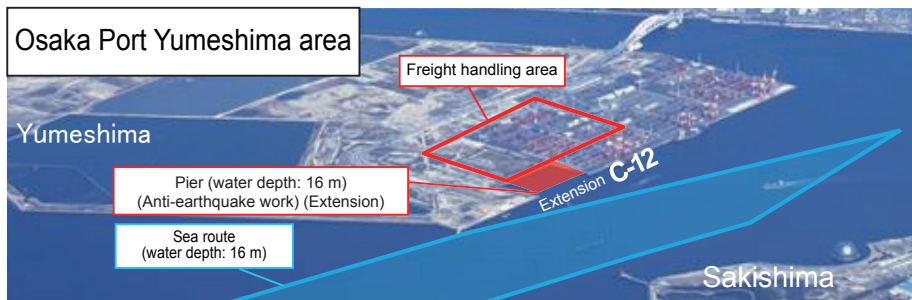
In the tsunami inundation prediction area in Kainan City, Wakayama Prefecture, administrative and disaster prevention center functions and manufacturers of high value added products are gathered. For this reason, we are promoting maintenance of coastal conservation facilities for the protection of these facilities as well as human life and property against large-scale earthquakes such as the Nankai Trough earthquake.



## Revitalization of Economy / Region

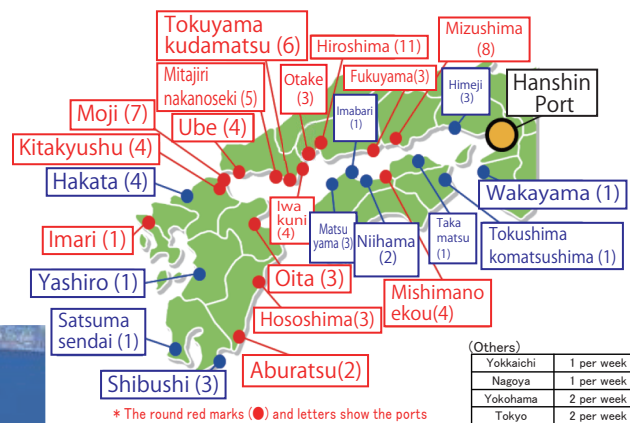
### Function enhancement of international container strategy port "Hanshin Port"

The world of maritime transportation and ports / harbors is undergoing change as shipping companies further reorganize their alliances and narrow down their ports of call, and AI, IoT, and other telecommunications and automation technologies rapidly progress. In this context, Japan is working to both improve its industrial competitiveness as well as maintain and improve employment and incomes for the Japanese people by continuously implementing strategic international container port policy that integrates both "hard" and "soft" elements.



To enable large vessels operating on major sea routes to enter Kobe Port and Osaka Port, construction of large container terminals with global standard water depth and area is being promoted.

Expansion of the international feeder network by the international strategic harbor competitiveness reinforcement measures



Frequency of visits: Approx. 40% increase

68 visits / week (April 2014)

↓

95 visits / week (April 2019)

# Maintenance

## Securing Public Safety and Security

Promotion of the Nankai Trough earthquake countermeasures, etc. Strengthening the disaster prevention function of government offices and facilities that will serve as a disaster prevention base

• Upgrading of government offices and facilities that serve as disaster control bases is being promoted in cooperation with the respective regions

After disasters such as Nankai trough giant earthquakes, development of the Osaka sixth district combination government building (tentative name) with the necessary earthquake-resistant performance can go ahead by the PFI method, so that government agencies entering work on disaster prevention move into action precisely.



• Promotion of the earthquake resistance of government office facilities  
Nara National Government Building No. 3, earthquake-resistance work

• Promotion of ceiling earthquake proofing measures for government office facilities  
Osaka Prefectural Police, 1st Riot Squad / Osaka Prefectural Police Academy, Specialized General Education Dept., ceiling repairs

Improvement using PFI methods

Promotion of the use of wood materials

Optimal use of public property in cooperation with communities

Promotion of future-oriented measures addressing aging infrastructure  
Deterioration measures for government office facilities

• Extending the life of government building infrastructure  
Nara National Government Building No. 2, life-extension repairs

• Improvement of the aging deteriorated parts of existing government offices  
Osaka National Government Building No. 3, elevator repairs  
Osaka Customs, Enforcement Division, in-house generator repairs

## Maintenance of Important Government Buildings



# Parks

## Rich and Vibrant Community Development

### Development of tourism base facility in national park

The homepage of each park can be seen when the QR code is read with a smartphone.

#### Yodogawa Riverside Park (Sewaritei Area)

Yawata, Kyoto

People can view the 1.4 km rows of cherry blossom trees from the Observation Tower in spring



#### Akashi Kaikyo National Government Park (Awaji Area)

Awaji, Hyogo

People can enjoy the scenery of seasonal flowers including spring tulips throughout the year



#### Akashi Kaikyo National Government Park (Kobe Area)

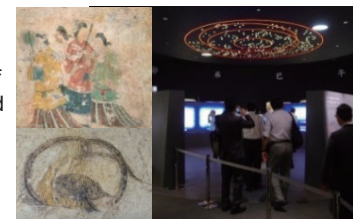
Kobe, Kyoto

People can easily experience mountain village life such as old private houses with thatch roofs and farming in the fields



#### Nara Palace Site Historical Park (Asuka Area)

Asuka-mura, Takaichi-gun, Nara  
People can see a replica of the sarcophagus excavated from an old burial mound and a restored fresco



#### Nara Palace Site Historical Park (Heijo Palace Area)

Nara City, Nara Prefecture  
People will be guided about the highlights of the entire park including the figures of now and bygone days of the Heijo shrine trace

(At the southern gate restoration worksite where construction is currently underway, people can watch carpenters specialized in temple construction use period techniques to restore the building to its original state.)

