

Kinki Regional Development Bureau Summary

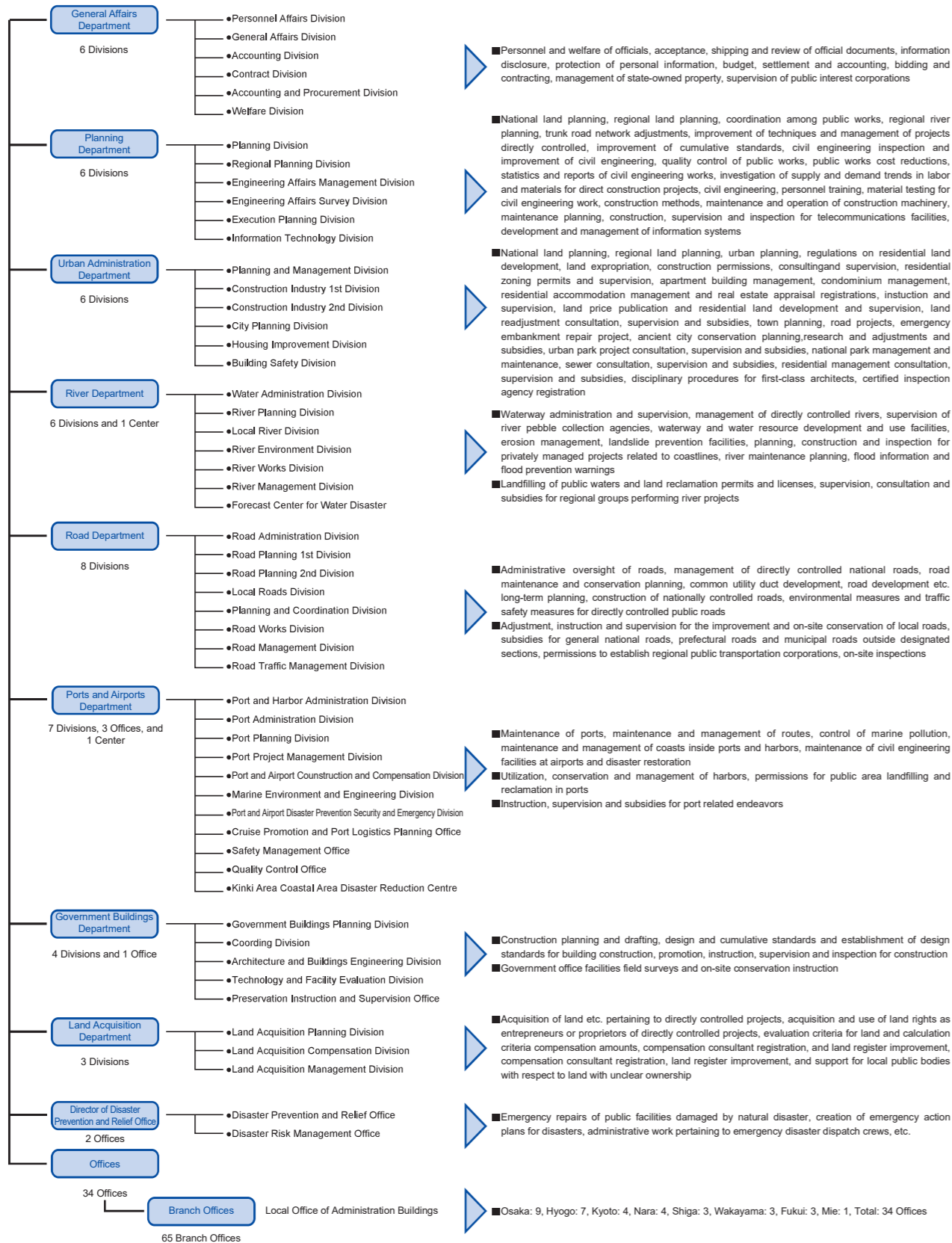
Office Jurisdiction

Bureaus are located in both Kobe and Osaka cities. Framework includes Administrative, Construction Planning, Rivers, Roads, Ports and Harbors, Maintenance and Land for a total of 8 departments, 46 divisions, 4 offices, and 2 centers, as well as 2 offices primarily responsible for disaster preparedness (located in Kobe City for ports and harbors).

To fulfil the duties of the bureau, there are 34 offices with 65 branches.

As of April 1st, 2023, there are 2,223 employees of the Kinki Regional Development Bureau that carry out the duties of the bureau.

Kinki Regional Development Bureau Framework

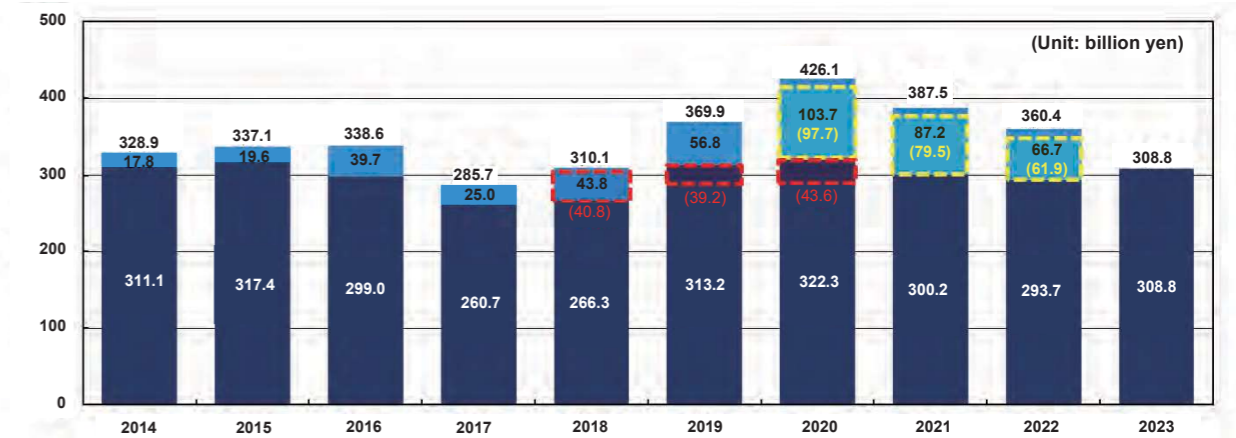


Kinki Regional Development Bureau History

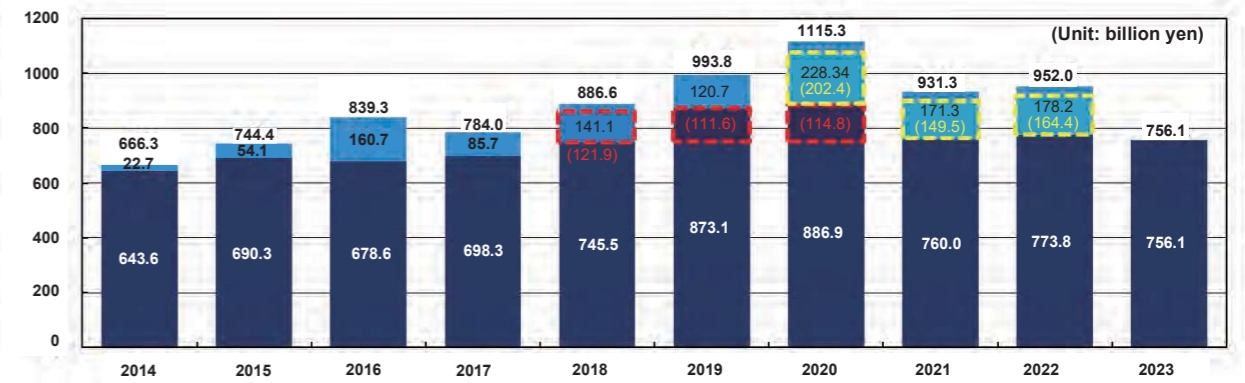
March	1874	The Home Ministry Osaka Branch of Civil Engineering was established.
May	1875	Home Ministry Osaka Branch of Civil Engineering had its name changed to Home Ministry Civil Engineering Osaka Bureau.
January	1877	The Home Ministry Civil Engineering Osaka Bureau was restructured and renamed to Home Ministry Yodo River Branch of Civil Engineering (Yodo River Management and Construction).
July	1886	Following the orders of the Supervising Officer of Civil Engineering, the bureau was reorganized into the 4th Ward Supervision Office and gained direct control over the Chubu and Kinki areas and began performing and supervising civil engineering works.
July	1894	Name changed to Fifth Ward Civil Supervision Office. Jurisdiction changed to Kinki, Tokushima and Kochi areas.
April	1905	Name changed to Civil Engineering Office, Osaka Branch of the Ministry of Home Affairs. Supervision authority was transferred to the Ministry and the civil engineering office absorbed responsibility for civil engineering for directly controlled land.
April	1919	Civil Engineering Office, Kobe Branch of the Ministry of Home Affairs was established. The jurisdiction of the office in Osaka changed.
November	1943	The Harbor Division changed to the Transport Ministry of Communication, 3rd Port Construction Department. The Osaka Civil Engineering Office changed into the Kinki Civil Engineering Office of the Ministry of Home Affairs and under order of Transport Ministry of Communication, 3rd Port Construction Department was merged with the Kobe office and the jurisdiction changed to include everything east of Hyogo due to the establishment of the Chubu Shikoku office.
May	1945	Because of government revisions, the Transport Ministry of Communication, 3rd Port Construction Department became the Ministry of Transportation 3rd Port Construction Department.
January	1948	Home Affairs changes into the Prime Minister's Office Kinki District Construction Bureau and became the local office for the Prime Minister's Office.
July	1948	According to the founding of the Ministry of Construction, the Prime Minister's Office Kinki District Construction Bureau had its name changed to Ministry of Construction Kinki District Construction Bureau.
August	1952	Ministry of Transportation 3rd Port Construction Department had its name changed to Ministry of Transportation 3rd Port Construction Bureau.
December	1958	Ministry of Construction Kinki District Construction Bureau moved from 2-6 Tosabori-dori, Nishi-ku, Osaka to its current location at the Osaka Joint Government Building at 1-5-44 Otemae, Chuo-ku, Osaka.
May	1965	Due to a revision in the Ministry of Transportation Installation Law, the Ministry of Transportation 3rd Port Construction Bureau absorbed the duties of airport engineering works. The Airport Engineering Division was established.
January	2001	Due to the reorganization of ministries and agencies, the Ministry of Construction Kinki District Construction Bureau and the Ministry of Transportation 3rd Port Construction Bureau were merged. Furthermore, the Ministry of Land, Infrastructure and Transport Kinki Regional Development Bureau was established.
November	2022	Ministry of Land, Infrastructure, Transport and Tourism Kinki Regional Development Bureau moved from Osaka Joint Government Building at 1-5-44 Otemae, Chuo-ku, Osaka to its current location at the Otemae Joint Government Building at 3-1-41 Otemae, Chuo-ku, Osaka.

Kinki Regional Development Bureau Budget Change

Kinki Regional Development Bureau Budget Change (Direct Control)



Kinki Regional Development Bureau Budget Change (Subsidies and grants)



Overview of initial and supplementary budgets since 2014 (direct control) *Excluding zero government bonds (Unit: million yen)

Initial budget	FY2014	FY2015	FY2016	FY2017	FY2018	FY2019	FY2020	FY2021	FY2022	FY2023
Flood Control	76,522	77,859	72,022	66,227	67,571	91,919	94,969	83,293	74,291	79,867
Coasts	2,302	1,525	2,215	2,637	2,677	3,710	3,587	3,101	3,465	3,248
Road Maintenance	189,623	196,462	178,086	148,238	157,124	181,439	190,062	179,720	180,849	193,780
Harbors	33,607	34,544	33,775	31,449	31,586	30,231	27,374	27,808	25,681	24,319
National Parks etc.	4,210	4,954	6,154	6,504	4,977	4,475	4,586	4,860	4,295	4,609
(General Public Total)	306,264	315,344	292,252	255,055	263,935	311,774	320,578	298,782	288,581	305,822
Office Building Maintenance	4,847	2,068	6,721	5,582	2,079	1,108	1,422	1,199	4,963	2,764
Airports	0	0	0	44	280	312	318	263	162	202
(Total)	311,111	317,412	298,973	260,681	266,294	313,194	322,318	300,244	293,706	308,789

Supplementary budget	FY2014	FY2015	FY2016	FY2017	FY2018	FY2019	FY2020	FY2021	FY2022	FY2023
Flood Control	3,922	12,920	10,713	11,181	28,086	27,647	47,851	31,740	25,267	-
Coasts	0	-	345	408	1,283	277	661	1,291	1,369	-
Road Maintenance	12,583	6,524	25,715	12,658	11,064	28,656	45,558	48,956	34,177	-
Harbors	1,000	200	2,422	450	2,630	0	8,982	3,931	5,101	-
National Parks etc.	0	0	480	300	0	90	453	639	652	-
(General Public Total)	17,505	19,644	39,675	24,997	43,063	56,670	103,505	86,557	66,567	-
Office Building Maintenance	313	0	0	0	734	81	159	692	128	-
Airports	0	0	0	0	0	0	0	0	0	-
(Total)	17,818	19,644	39,675	24,997	43,797	56,751	103,664	87,249	66,695	-

*Figures are rounded to the nearest whole number, so fractions may not add up to the total.