

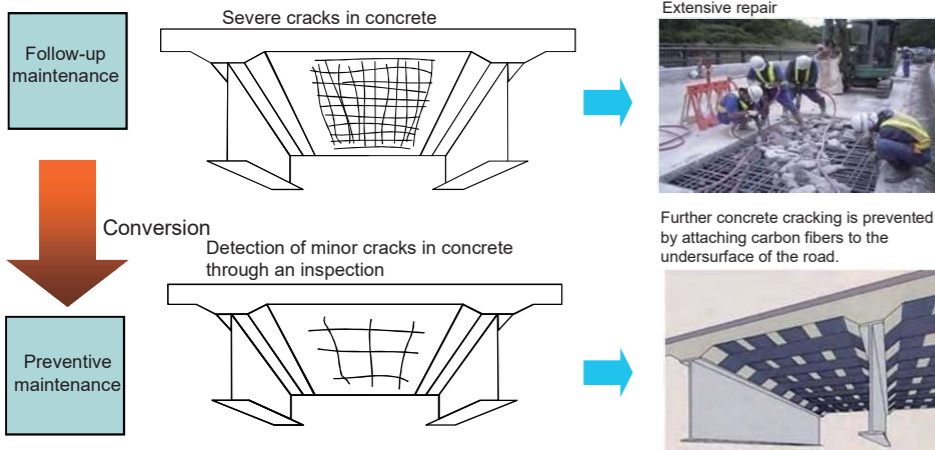
Roads

Safety of the People, Guarantee of Security

Realization of sustainable infrastructure maintenance through measures against infrastructure aging, etc.

We diagnose the soundness of road facilities (bridges, tunnels, paving, slopes, earthworks, road accessories, etc.) from inspections and promote aging countermeasures through a maintenance cycle of diagnosis and measures.

- [Major projects] Repairs to Higo Bridge on National Route 27
Repairs to Kareigawa Tunnel on National Route 42
Repairs to Tsurumai Bridge girders on the Municipal Road Tomigaoka Nakamachi Line (Repairs contracted out)



Example of bridge inspection



Example of tunnel inspection

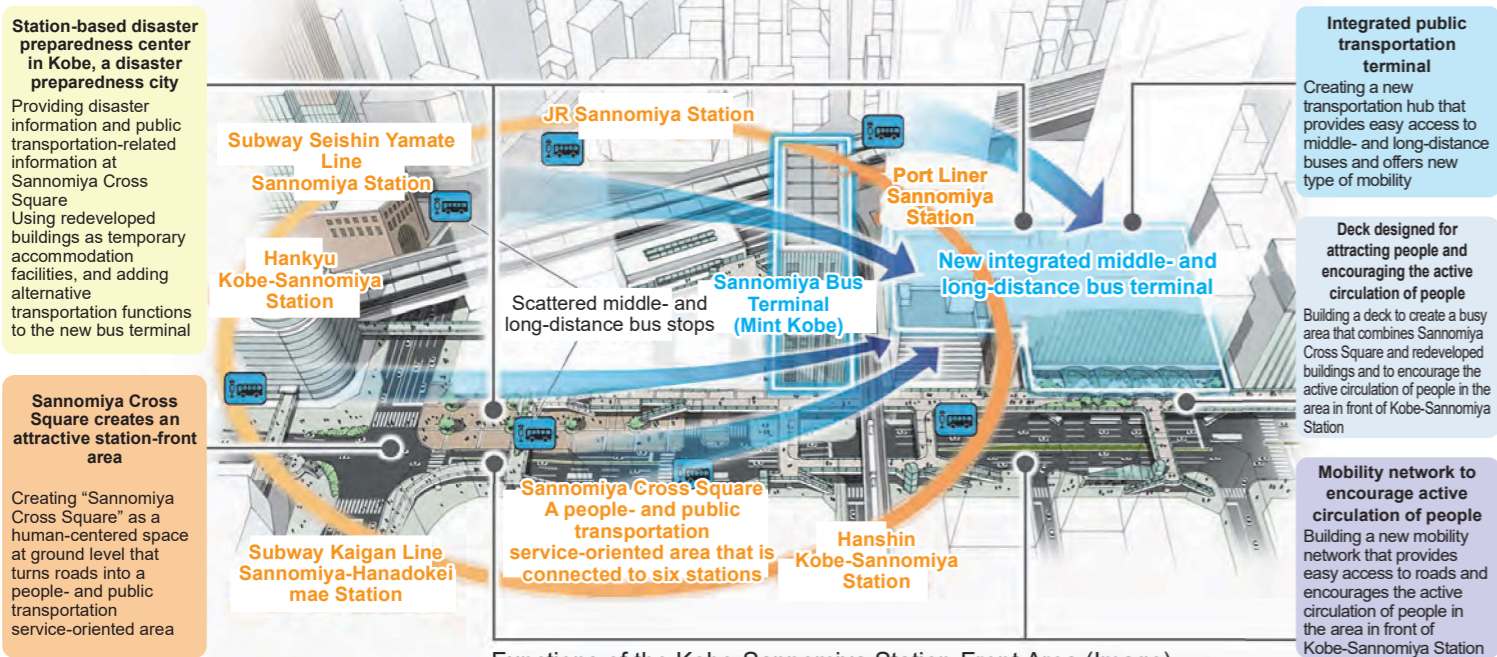


Creating prosperous and energetic regions and decentralized nation building

Promoting the development of transportation and disaster prevention bases

The development of the Kobe Sannomiya Station Traffic Terminal on National Route 2, in conjunction with the redevelopment building (private project), consolidates dispersed bus stops to create new medium and long-distance bus terminals and other transportation hubs, improving transfer and waiting environments, smoothing traffic flow, and enhancing disaster prevention functions.

—Creation of an integrated middle- and long-distance bus terminal that is connected to six stations—



Functions of the Kobe-Sannomiya Station-Front Area (Image)

Creating prosperous and energetic regions and decentralized nation building

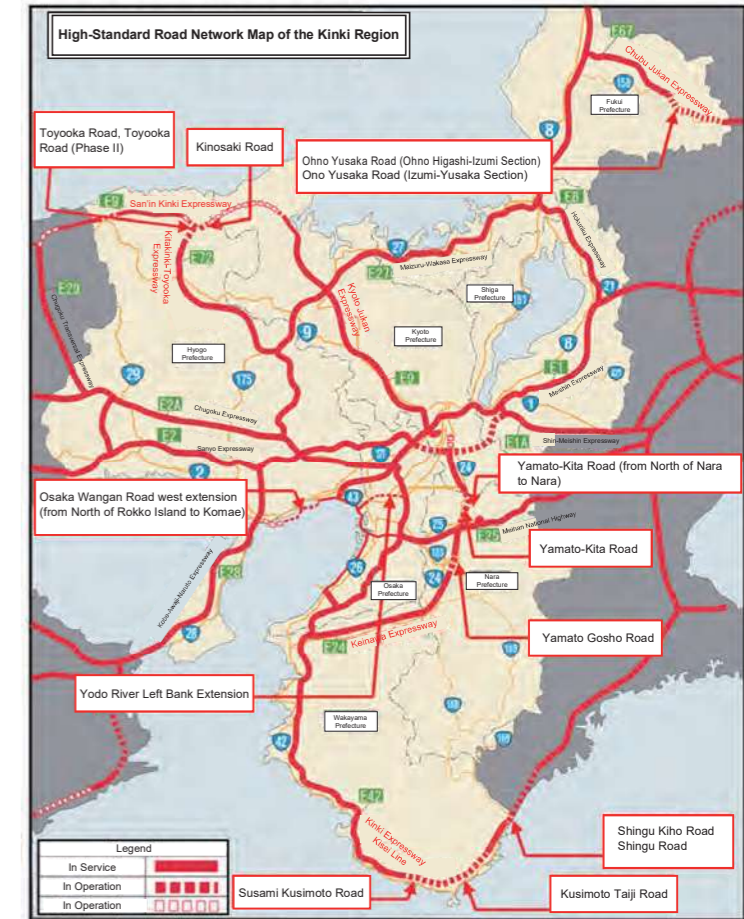
Ensuring economic and social activity recovery and accelerating and expanding the economic virtuous cycle

Promoting the development of wide-area road networks

We promote the development of a circular road network in the Kinki area to achieve a fast, smooth, and competitive logistics network by alleviating traffic congestion.

We promote the development of road networks connecting regions and hubs to support a society with digital implementation, smooth and invigorate the flow of people and goods, and transition to decentralized nation-building.

- [Major projects]
- National Route 1 Yodo River Left Bank Extension
 - National Route 2 Osaka Wangan Road west extension (from North of Rokko Island to Komae)
 - National Route 24 Keinawa Expressway
Yamato-Kita Road (from North of Nara to Nara)
 - National Route 42, Yamato-Kita Road, Yamato Goshu Road
Kinki Expressway Kisei Line
Susami Kusimoto Road, Kusimoto Taiji Road
 - National Route 158, Shingu Road, Shingu Kiho Road
Chubu Jukan Expressway
Ohno Yusaka Road (Ohno Higashi-Izumi Section)
Ono Yusaka Road (Izumi-Yusaka Section)
 - National Route 178 San'in Kinki Expressway
Kinosaki Road
 - National Route 483 Kitakinki-Toyooka Expressway
Toyooka Road, Toyooka Road (Phase II)



Promotion of DX, GX, and MX in the Road Sector

We advance road management and data-driven traffic management for DX, promote energy-saving road construction and EV-compatible infrastructure for a decarbonized society for GX, and implement autonomous driving technology and human-centered road space restructuring for MX.

DX (Digital Transformation)

We promote the installation of digital sensing devices like CCTV and AI cameras, advance AI-based anomaly detection and traffic management, and aim for a transition to digital technology-based road management.



Automatic Traffic obstruction detection using CCTV + AI technology

GX (Green Transformation)

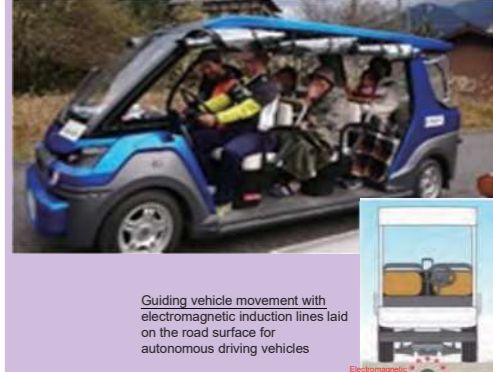
We will expand charging facilities using road space to promote the spread of electric vehicles, aiming to achieve the government's goal of 100% electric vehicles (new passenger car sales) by 2035.



Status of EV charger installation at Roadside Station Kono

MX (Mobility Transformation)

We will promote the implementation of autonomous driving using regional hubs like road stations to ensure mobility and support sustainable initiatives in aging and depopulating mountainous areas.



Autonomous driving service based at Roadside Stations