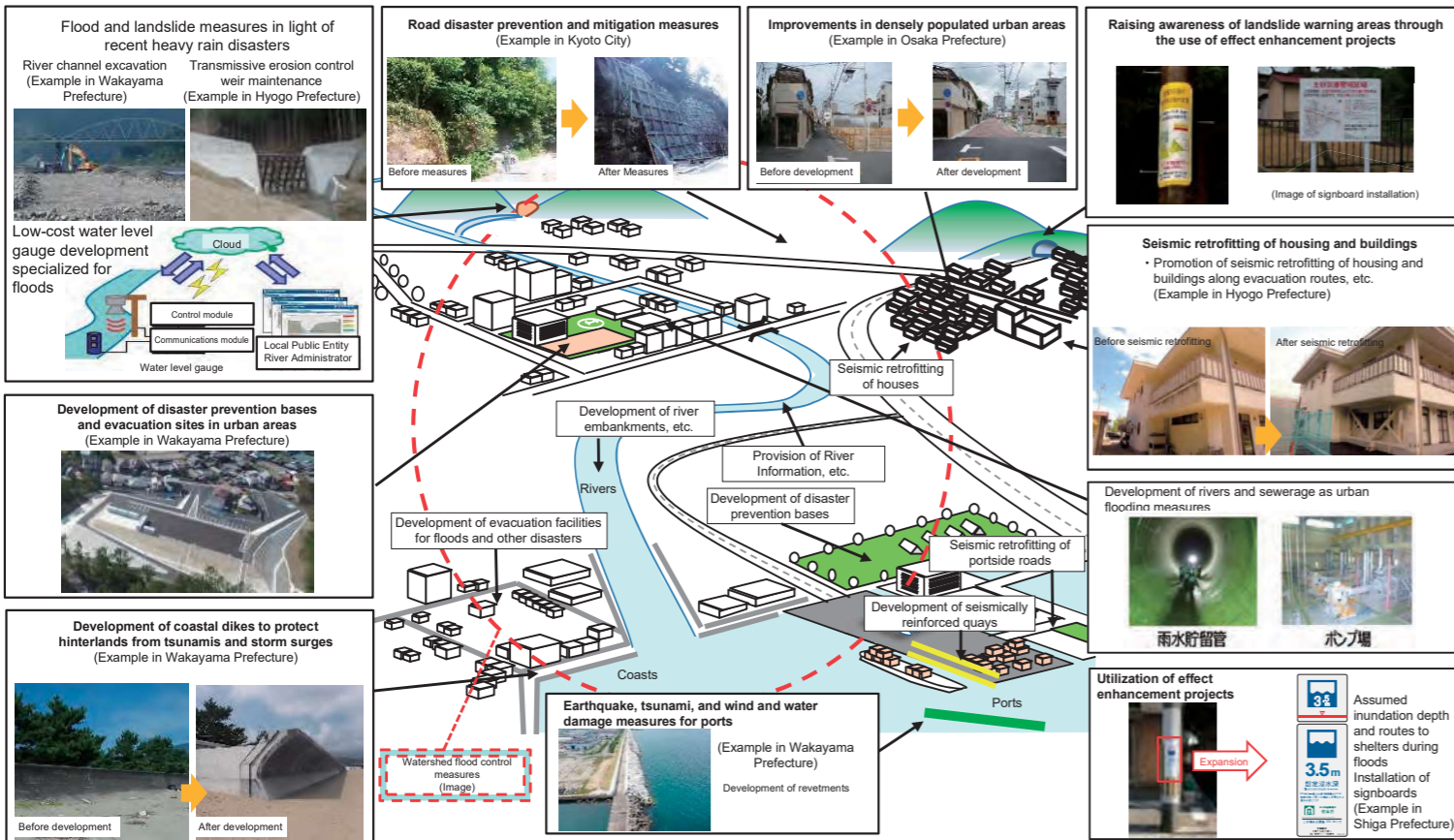


Grants and Subsidies

Introduction of disaster prevention and safety grants and comprehensive social capital development grants

Disaster prevention and safety grants
(Focused support for the reconstruction of infrastructure to protect lives and livelihoods and ensure the safety of living spaces)

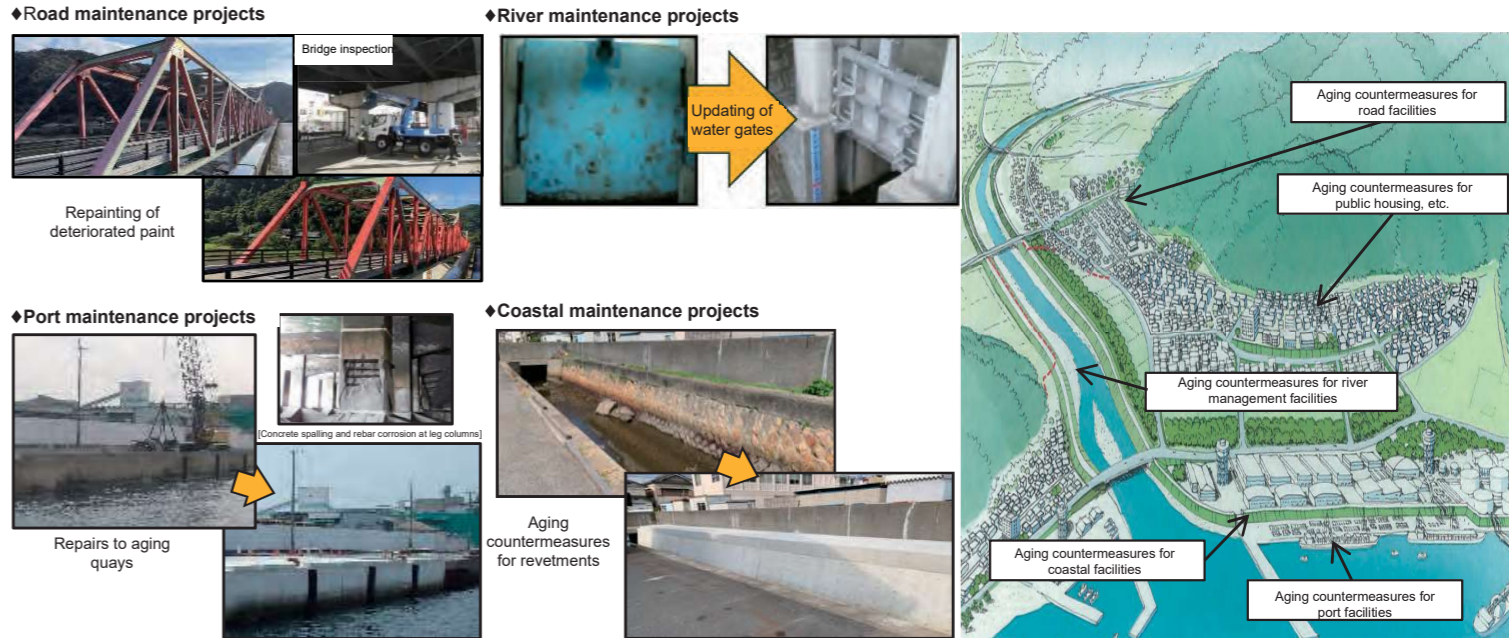
Concentrated support for local public organizations' efforts in disaster prevention and mitigation measures for increasingly severe and frequent wind and water disasters, landslides, large earthquakes, tsunamis, and aging countermeasures for preventive maintenance.



Introduction of individual subsidy projects for aging countermeasures

Subsidies
(Implementing focused and planned support)

Based on the Infrastructure Longevity Plan, individual subsidy projects (maintenance projects) are established for aging countermeasures, providing focused and planned support for local public organizations.



Initiatives for the Osaka-Kansai Expo

Promoting the development of social capital that can be active even after the 2025 Osaka-Kansai Expo

Comprehensive social capital development grants
(Projects leading to enhanced growth and regional revitalization)

Integrating individual subsidies for local public organizations under the Ministry of Land, Infrastructure, Transport and Tourism into one grant, providing a comprehensive grant with high flexibility and creativity for local public organizations.

