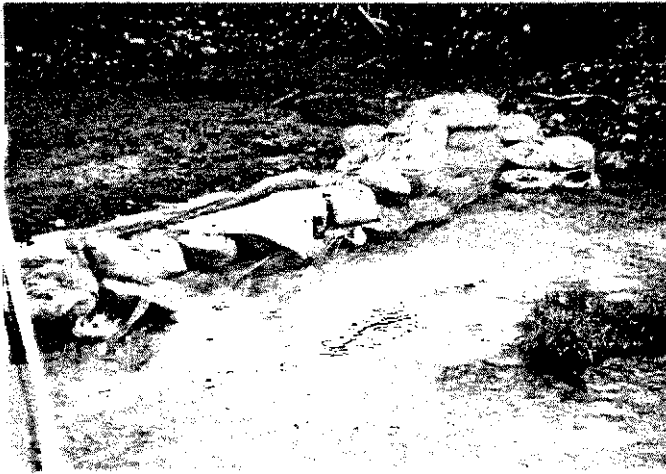
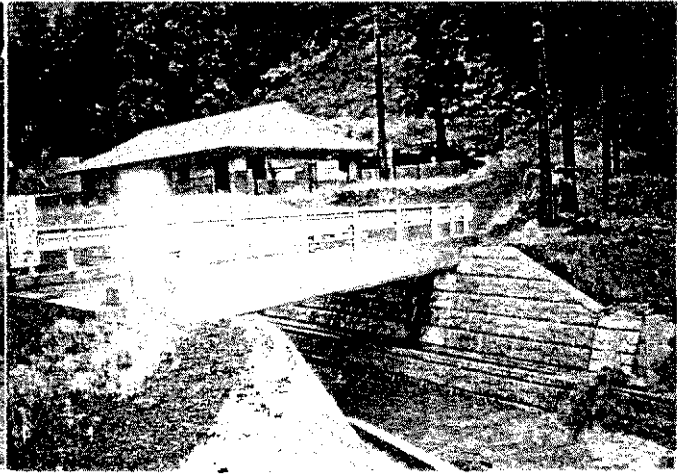


# 公団丹生ダム工事



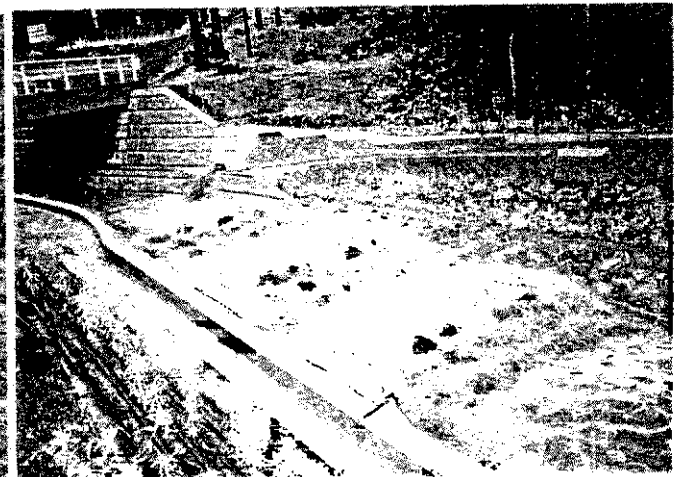
上丹生上流 丹生ダム道路工事



妙理川



管並地区

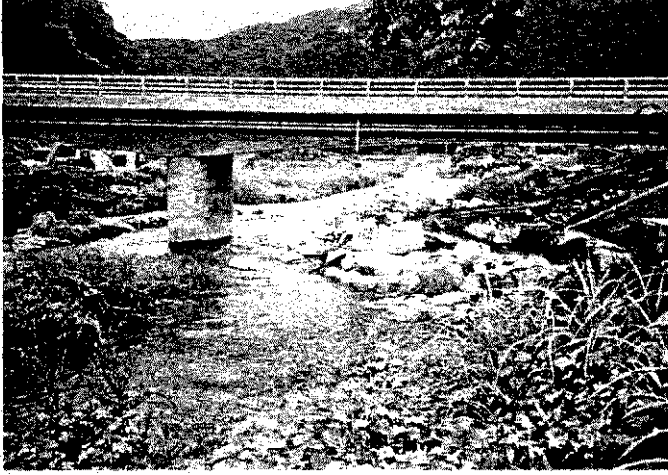


妙理川



管並

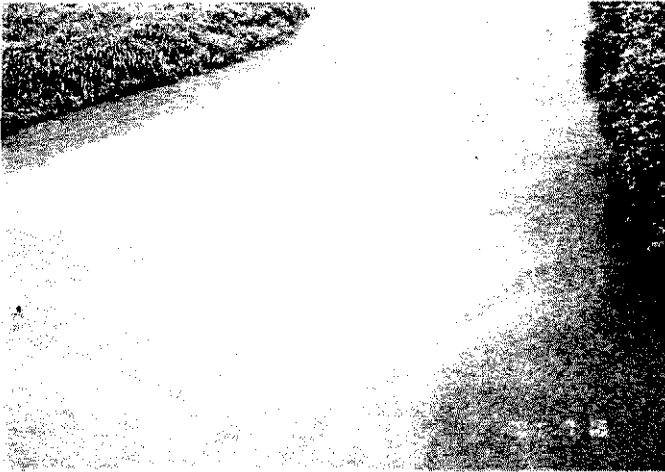
# 公団丹生ダム工事



管並



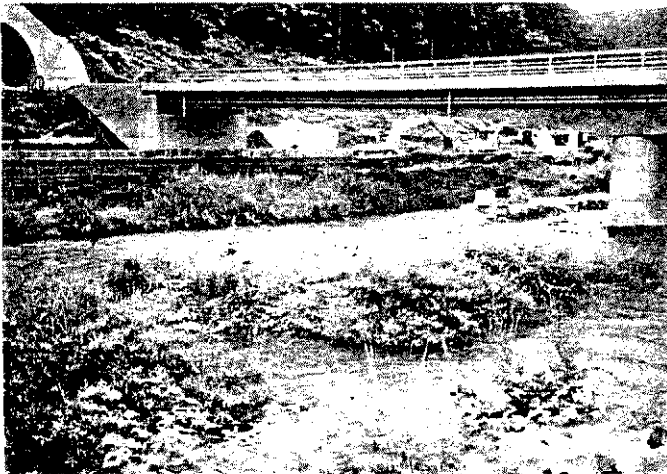
8月には珍しい出水  
だけど鮎はのぼってこない  
夜はひどい濁水



姉川・高時合流

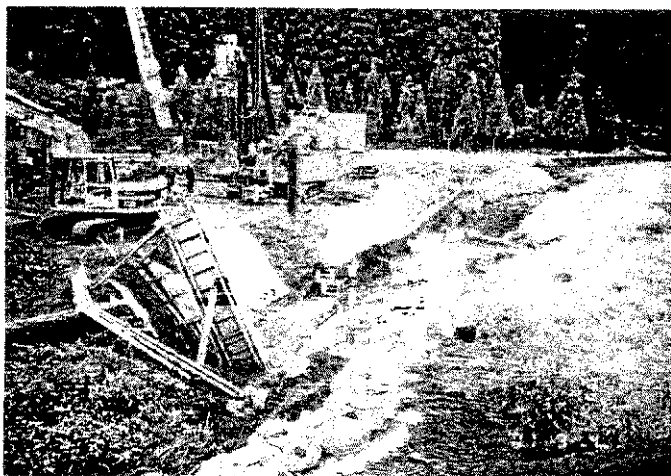


高時・杉野合流点



トンネル工事・護岸工事

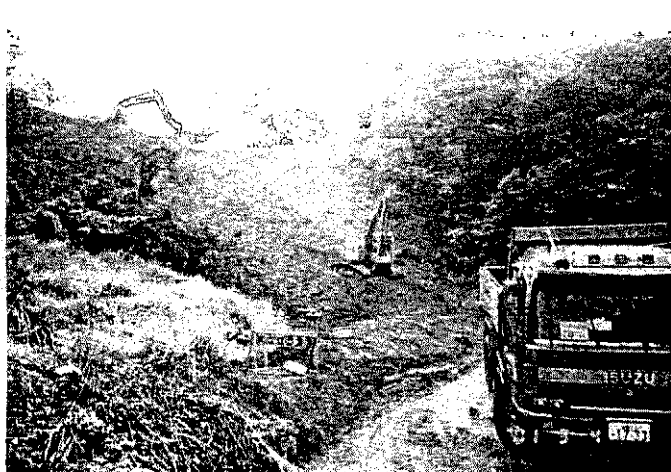
# 公団丹生ダム工事



中河内下流



ダムサイト付近



中河内より下流で



ダムサイト付近

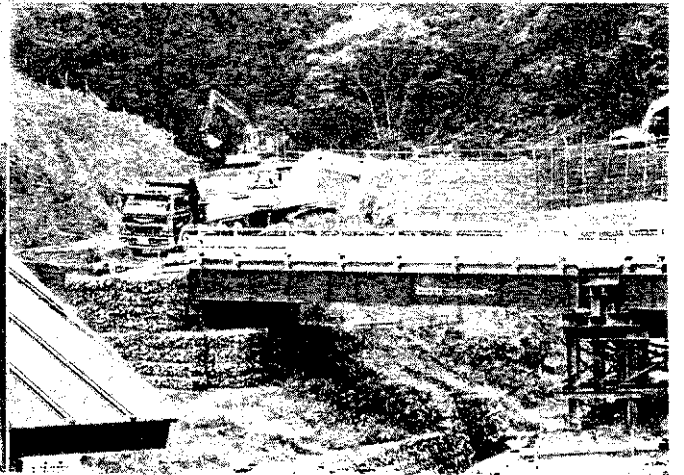
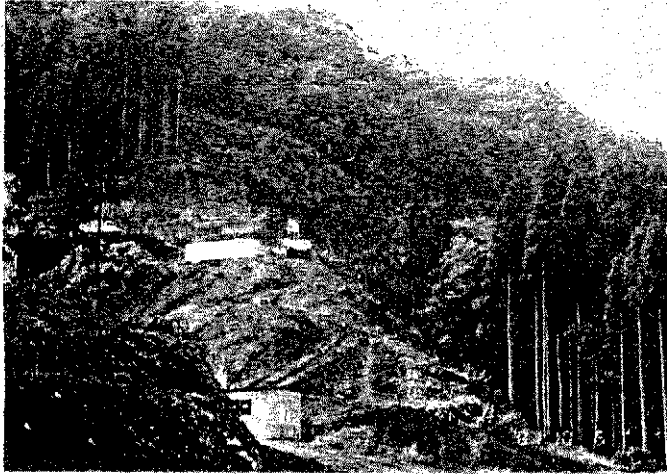


すぐ右下が高時川

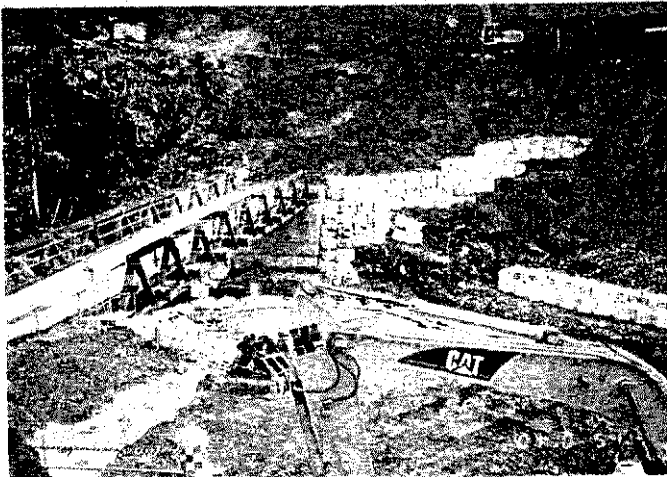
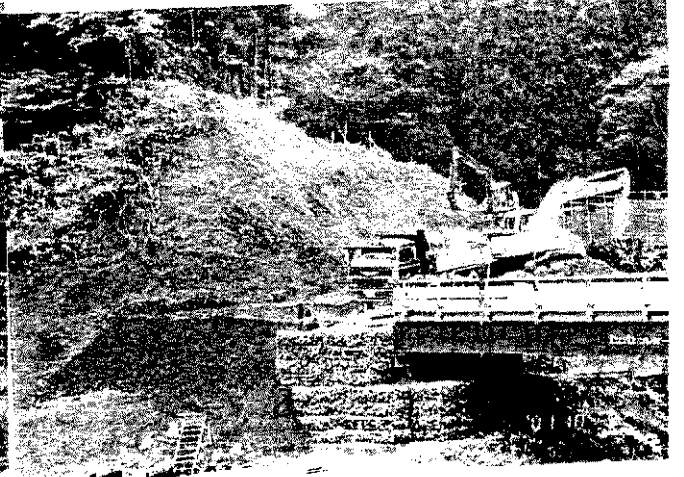
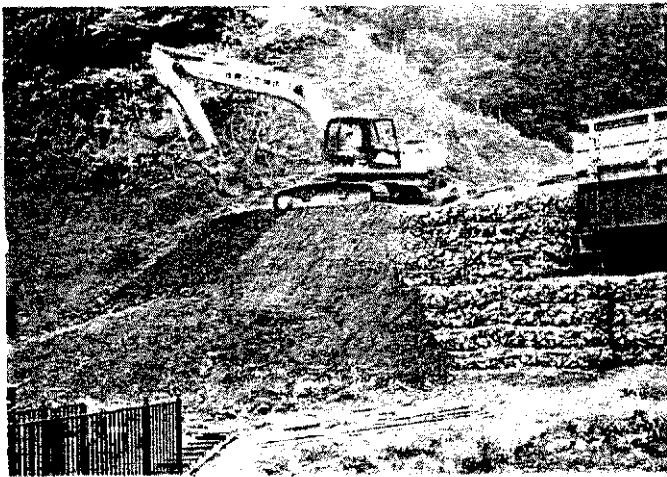


土捨て場すぐ近く川

# 公団丹生ダム工事

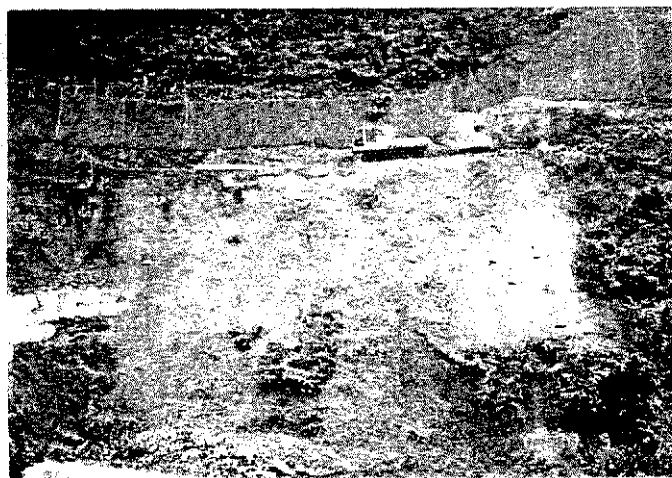


妙理川

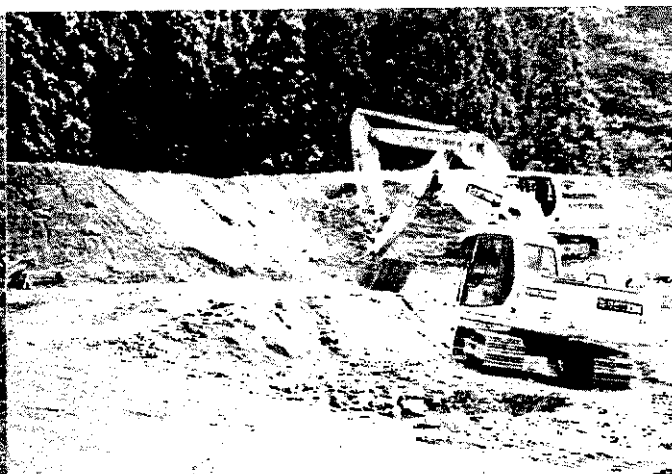




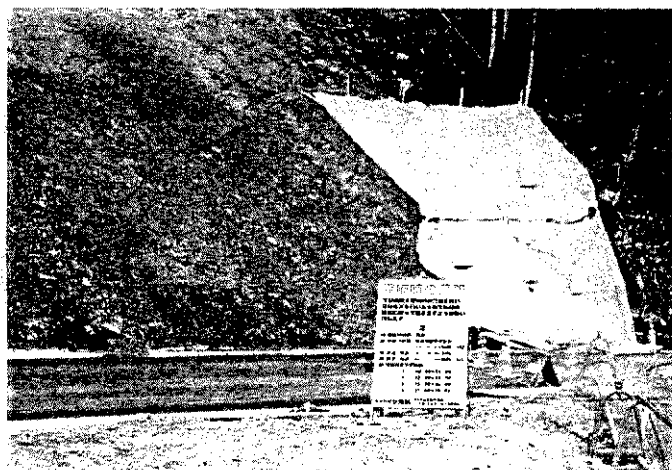
# 公団丹生ダム工事



道路すぐ下が丹生川



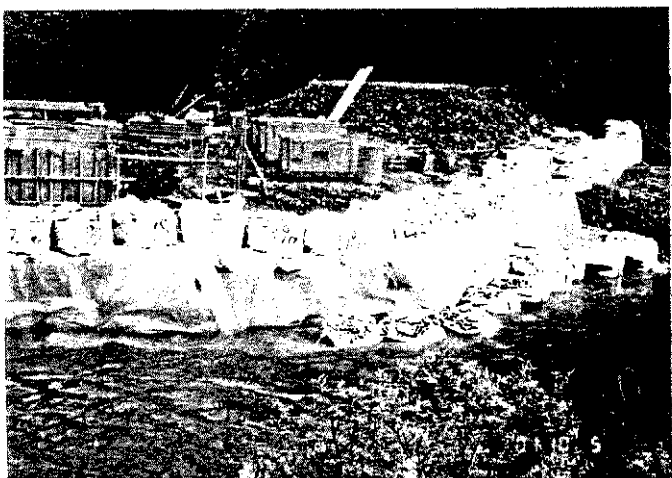
奥川・並川・丹生川合流付近



妙理川



高時・杉野合流点



橋脚工事