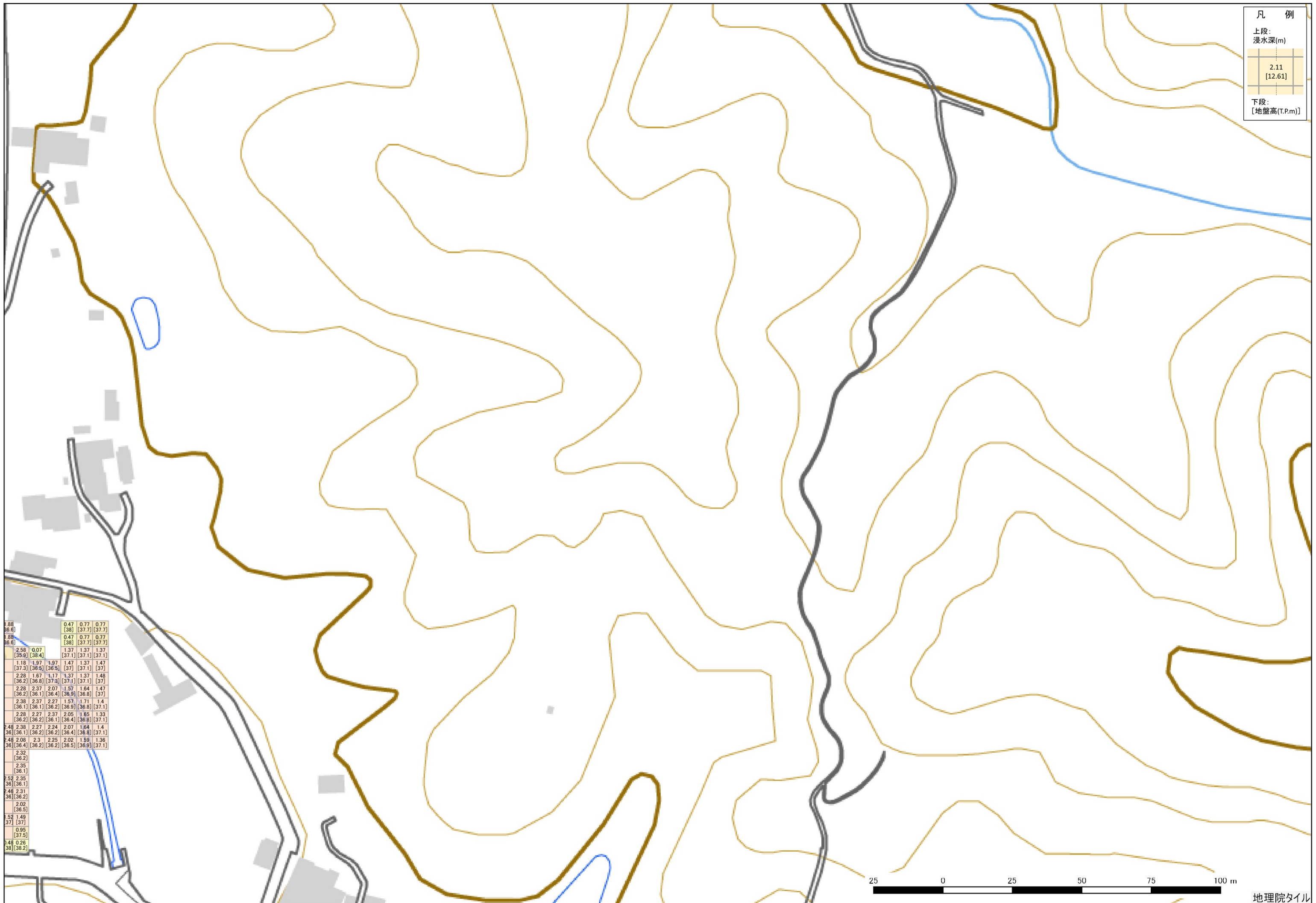


凡 例

上段:  
漫水深(m)

2.11
[12.61]

下段:  
[地盤高(T.P.m)]



1.88	0.47	0.77	0.77
[36.6]	[38]	[37.7]	[37.7]
1.88	0.47	0.77	0.77
[36.6]	[38]	[37.7]	[37.7]
2.58	0.07	1.37	1.37
[35.9]	[38.4]	[37.1]	[37.1]
1.18	1.97	1.97	1.47
[37.3]	[36.5]	[37]	[37.1]
2.28	1.87	1.37	1.37
[36.2]	[36.8]	[37.3]	[37.1]
2.28	2.37	2.07	1.57
[36.2]	[36.1]	[36.4]	[36.9]
2.38	2.37	2.27	1.57
[36.1]	[36.1]	[36.2]	[36.9]
2.28	2.27	2.37	2.05
[36.2]	[36.2]	[36.1]	[36.4]
2.48	2.38	2.27	2.24
[36]	[36.1]	[36.2]	[36.4]
2.49	2.08	2.3	2.25
[36]	[36.4]	[36.2]	[36.5]
2.32			
[36.2]			
2.35			
[36.1]			
2.52	2.35		
[36]	[36.1]		
2.46	2.31		
[36]	[36.2]		
2.02			
[36.5]			
1.52	1.49		
[37]	[37]		
0.95			
[37.5]			
2.48	0.25		
[38]	[38.2]		

