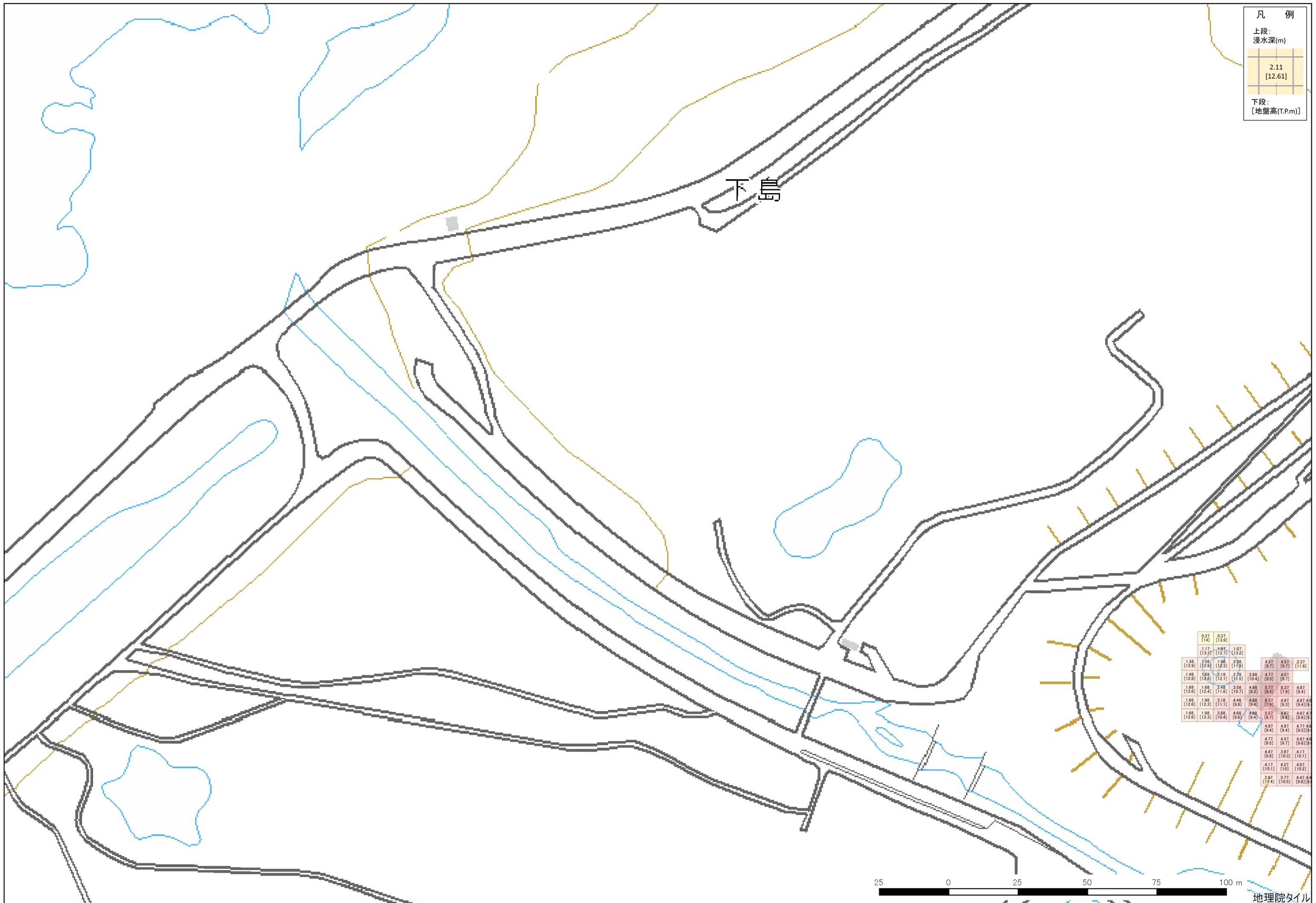


凡 例

上段:  
漫水深(m)

2.11
[12.61]

下段:  
[地盤高(T.P.m)]



0.27	0.37								
[14]	[13.9]								
1.17	1.97	1.07							
[12.3]	[12.7]	[13.2]							
1.38	2.28	1.98	2.38	4.57	4.57	2.37			
[12.8]	[12.3]	[12.2]	[11.9]	[9.7]	[9.7]	[11.8]			
1.48	1.68	2.18	2.78	3.88	4.77	4.57			
[12.8]	[12.6]	[12.1]	[11.5]	[10.4]	[9.5]	[9.7]			
1.68	1.88	2.48	3.58	4.88	5.77	6.37	4.87		
[12.6]	[12.4]	[11.8]	[10.7]	[9.3]	[8.5]	[7.9]	[9.4]		
1.68	1.98	3.18	4.48	4.88	6.37	4.97	4.87	4.87	4.87
[12.6]	[12.3]	[11.1]	[9.8]	[9.4]	[7.9]	[9.3]	[9.4]	[9.4]	[9.4]
1.88	1.98	3.88	4.68	4.68	5.57	4.67	4.67	4.67	4.67
[12.6]	[12.3]	[10.4]	[9.6]	[9.4]	[8.7]	[9.3]	[9.3]	[9.3]	[9.3]
					4.87	4.87	4.77	4.77	4.77
					[9.4]	[9.4]	[9.4]	[9.5]	[9.5]
					4.77	4.57	4.67	4.67	4.67
					[9.5]	[9.7]	[9.7]	[9.6]	[9.6]
					4.47	3.97	4.17		
					[9.8]	[10.3]	[10.1]		
					4.17	4.27	4.07		
					[10.1]	[10]	[10.2]		
					2.87	3.37	4.47	4.47	4.47
					[11.4]	[10.5]	[9.8]	[9.8]	[9.8]