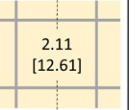
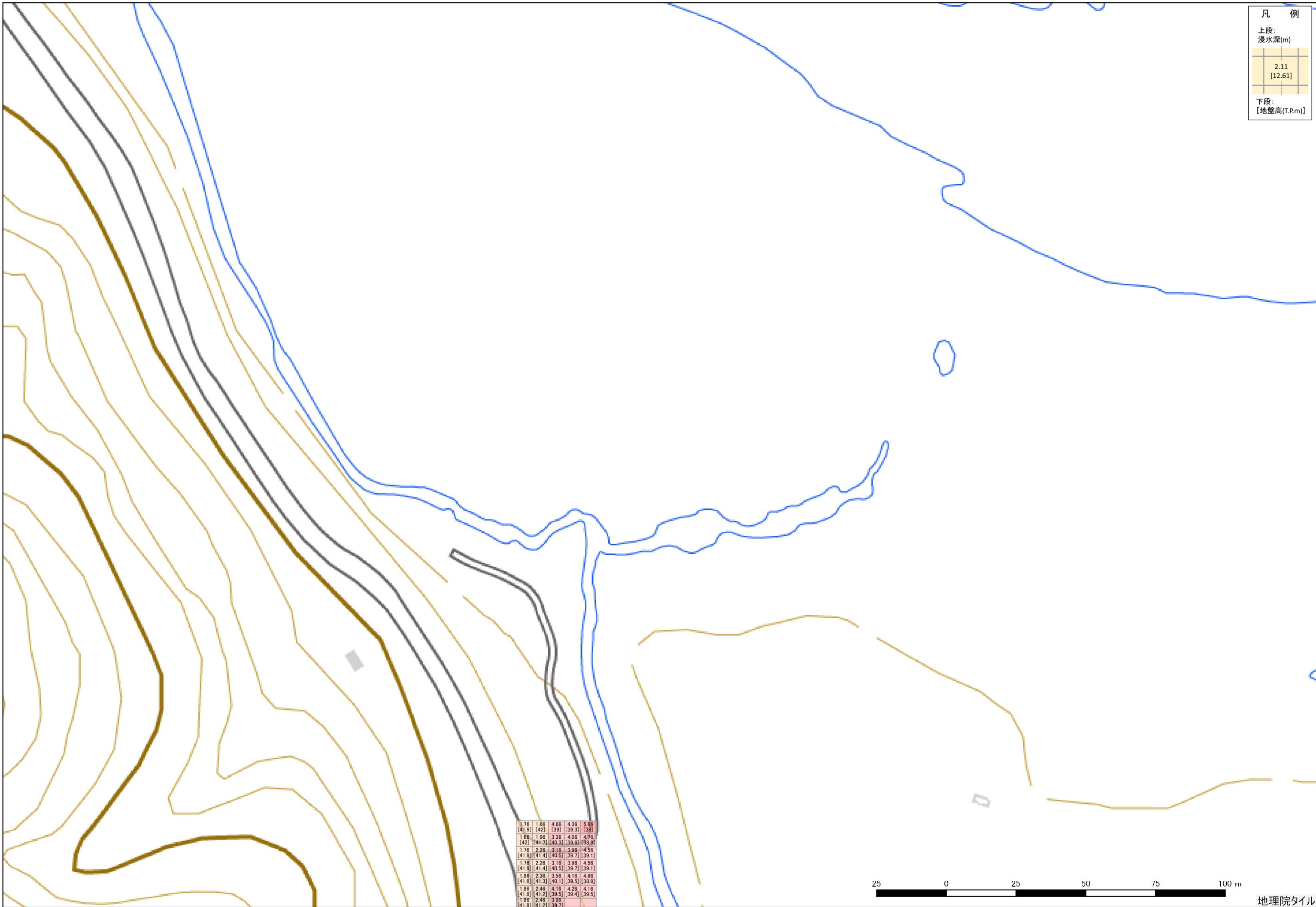


凡 例

上段:
浸水深(m)



下段:
[地盤高(T.P.m)]



1.76	1.66	4.66	4.36	5.06
[41.9]	[42]	[39]	[39.3]	[38]
1.66	1.56	3.36	4.06	4.76
[42]	[41.7]	[40.3]	[39.6]	[38.9]
1.76	2.26	3.16	3.96	4.56
[41.9]	[41.4]	[40.5]	[39.7]	[39.1]
1.76	2.26	3.16	3.96	4.56
[41.9]	[41.4]	[40.5]	[39.7]	[39.1]
1.86	2.36	3.56	4.16	4.86
[41.8]	[41.3]	[40.1]	[39.5]	[38.8]
1.86	2.46	4.16	4.28	4.16
[41.8]	[41.2]	[39.5]	[39.4]	[39.5]
1.86	2.46	3.96		
[41.8]	[41.2]	[39.7]		

